



HEATEFLEX[®]
Ultra-Pure Heating Solutions



*True Sanitary
In-Line Heater*

True Sanitary In-Line Heater

Designed for Ultra-Hygienic Applications

Heateflex's True Sanitary In-Line Heater is designed for use in demanding environments where hygiene is crucial. Constructed with 316L electropolished stainless steel, the True Sanitary meets the sanitary standards required in the life sciences, medical device, pharmaceutical, and food & beverage industries. The patented connection between the heater and the housing plus the gravity draining assembly ensure easy cleaning and inspection while eliminating potential for particle entrapment. With efficient temperature heating and easy integration, count on the True Sanitary for your heating processes.

SANITARY AND HYGIENIC DESIGN

- **100% 316L Stainless Steel Wetted Surfaces**
- **32µin Roughness Average** finish reduces wear; lessens probability of particle entrapment
- **Patented Sanitary Connection** between heater and housing

FAST AND EFFICIENT HEATING

- **Electric Heating Elements** provide high-temperature efficiency with fast temperature response time

EASY CLEANING AND INSPECTION

- **Removable End Caps** connected with tri-clamp fittings

GRAVITY DRAINING ASSEMBLY

- **Complete Draining Capability** eliminates dead legs and possibility of contamination

FACILITY DATA

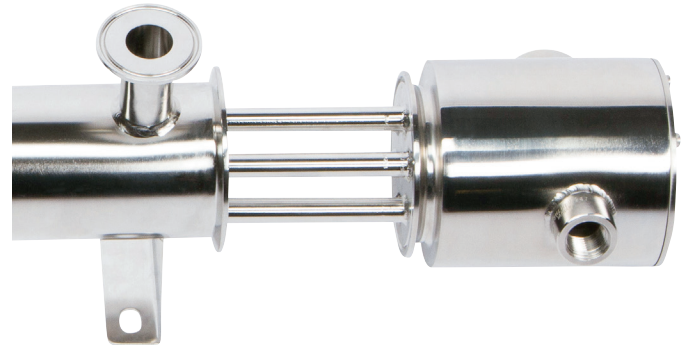
POWER	12, 18, and 24kW
VOLTAGE	208-480 VAC, 3-phase
WETTED SURFACE	316L SS, Electropolished
INPUT/OUTPUT	1" Tri-Clamp Fittings
MAX TEMPERATURE	95°C
PRESSURE RATING	60 PSI at 95°C
MAX FLOW	20 GPM

SAFETY FEATURES

- **Over-Temperature Thermocouple** regulates temperature by limiting heat produced within housing

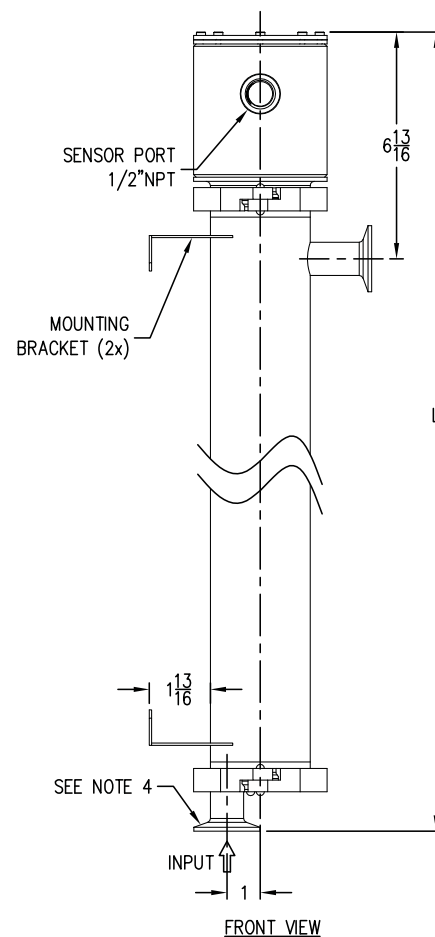
OPTIONAL FEATURES

- **ASME BPE Design and Certificates** available upon request
- **Thermal Cut-Off** ensures heater does not exceed temperature range to prevent overheating
- **Process Thermocouple** ensures fluid temperature is accurately maintained
- **Temperature Controller** in a "plug and play" design to provide precise fluid temperature
- **Roughness Average** 20 and 25 μin finishes available



Patented connection between heater and housing
(Tri-Clamp and gasket not pictured)

KW	VOLTAGE	AMPS	LENGTH (L)
12	208	34	27 $\frac{5}{8}$ "
	240	29	26"
	400/480	18/15	28 $\frac{1}{4}$ "
18	208	50	37 $\frac{1}{8}$ "
	240	44	35 $\frac{1}{2}$ "
	400/480	26/15	37 $\frac{3}{4}$ "
24	208	67	44 $\frac{3}{8}$ "
	240	58	42 $\frac{7}{8}$ "
	400/480	35/29	45"



Vertical mount of heater



Call today for prices and lead times,
or visit us online at www.heateflex.com

405 E. Santa Clara Street, Arcadia, CA 91006 | T 626.599.8566 | F 626.599.9567

Patent No.: 6,123,050.
Heateflex is a registered trademark of Heateflex Corporation.
All data is subject to change without notice.
Copyright ©2019 Heateflex Corporation

www.heateflex.com

SDH-1904-2