



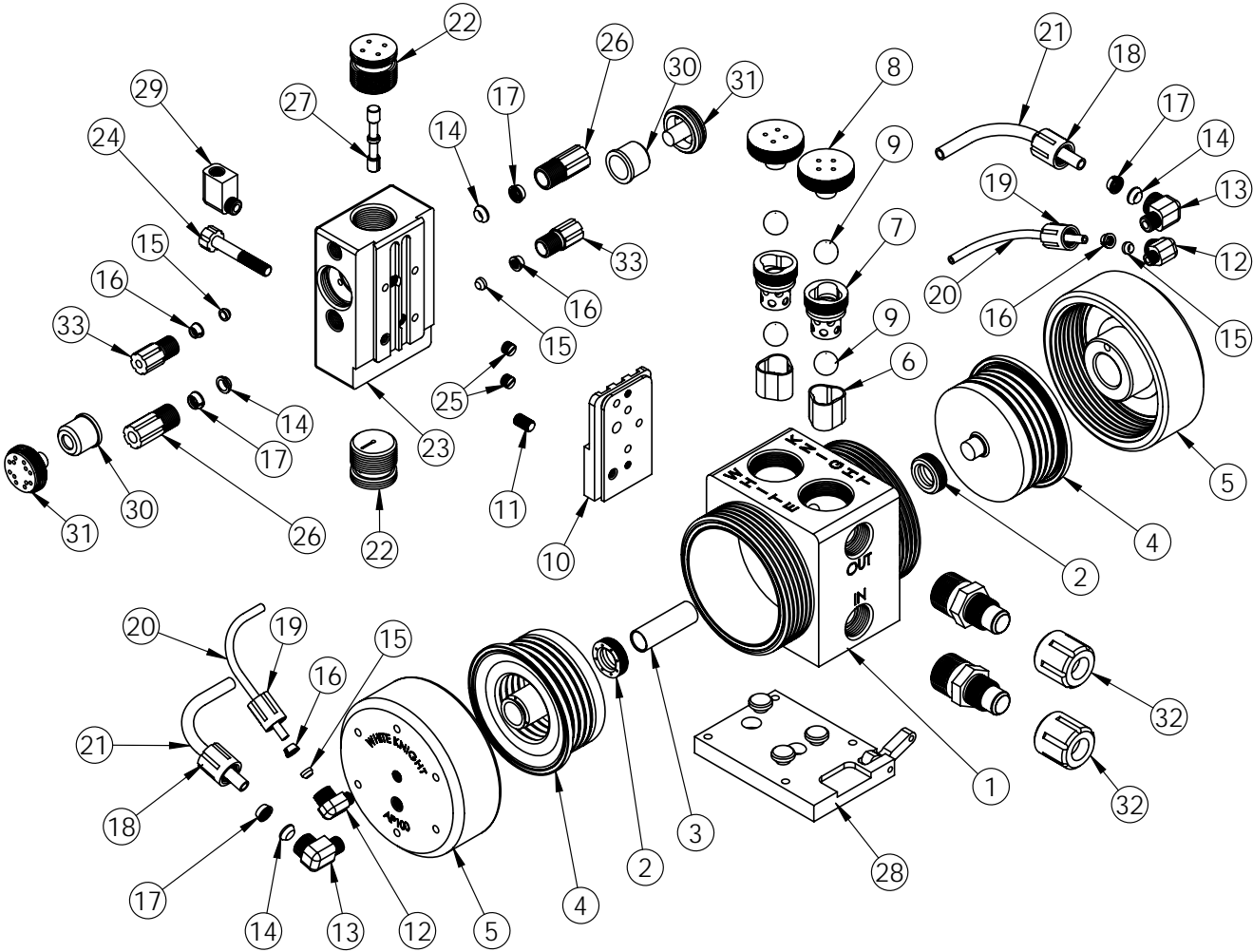
WHITE KNIGHT®

.....engineer approved™

PUMP EXPLODED VIEW

AP100 Exploded View

AP100 pumps are legacy models. We recommend users consider PSA060 pumps, which provide better performance, increased flow rates, higher pressure capabilities, improved reliability, extended pump life and warranty periods, as well as shorter lead times. Details: <https://wkfluidhandling.com/psa-series/>



AP100 BILL OF MATERIALS							
ITEM NO.	PART NUMBER	DESCRIPTION	QTY.	ITEM NO.	PART NUMBER	DESCRIPTION	QTY.
1	1125-TE-0003	PUMP BODY	1	18	6070-BP-0002	3/8" FEMALE GRIPPER NUT	2
2	5143-TE-0003	SHAFT SEAL	2	19	6070-BP-0001	1/4" FEMALE GRIPPER NUT	2
3	5144-PF-0002	SHAFT	1	20	10071-PF-0008	THICK-WALL TUBING, 1/4"	2
4	14300-PF-0002	BELLOWS ASSEMBLY	2	21	10071-PF-0010	3/8" PFA Tubing	2
5	2127-BP-0003	PUMP HEAD	2	22	6530-TE-0002	SHUTTLE END PLUG	2
6	4135-TE-0002	BOTTOM CHECK SEAT	2	23	14400-BP-0004	SHUTTLE BODY AND SLEEVE	1
7	4142-TE-0003	TOP CHECK CAGE	2	24	10010-BP-0005	SHUTTLE SET SCREW	1
8	4140-TE-0002	TOP CHECK PLUG	2	25	10040-TE-0002	1/8" NPT Plug	3
9	4100-TE-0002	CHECK BALL	4	26	6070-BP-0006	3/8" MALE GRIPPER NUT	2
10	6520-BP-0002	SHUTTLE ADAPTER PLATE	1	27	6560-CE-0002	SHUTTLE SPOOL	1
11	10010-TE-0008	ADAPTER PLATE SCREW	1	28	14200-NP-0002	BASE PLATE ASSEMBLY	1
12	6030-BP-0001	1/8" NPT X 1/4" GRIPPER ELBOW	2	29	6010-BP-0005	1/4" NPT x 1/4" FNPT ELBOW	1
13	6020-BP-0003	1/4" NPT x 3/8" GRIPPER ELBOW	2	30	6140-TE-0002	WHISPER MUFFLER	2
14	6080-TE-0002	3/8" FERRULE	4	31	6150-BP-0002	WHISPER MUFFLER CAP	2
15	6080-TE-0001	1/4" FERRULE	4	32	14510-TE-0005	1" FLARE ASSEMBLY	2
16	6080-KF-0001	1/4" GRIPPER	4	33	6070-BP-0005	MALE GRIPPER NUT, 1/4"	2
17	6080-KF-0002	3/8" GRIPPER	4				

<https://wkfluidhandling.com/ap-series/>

