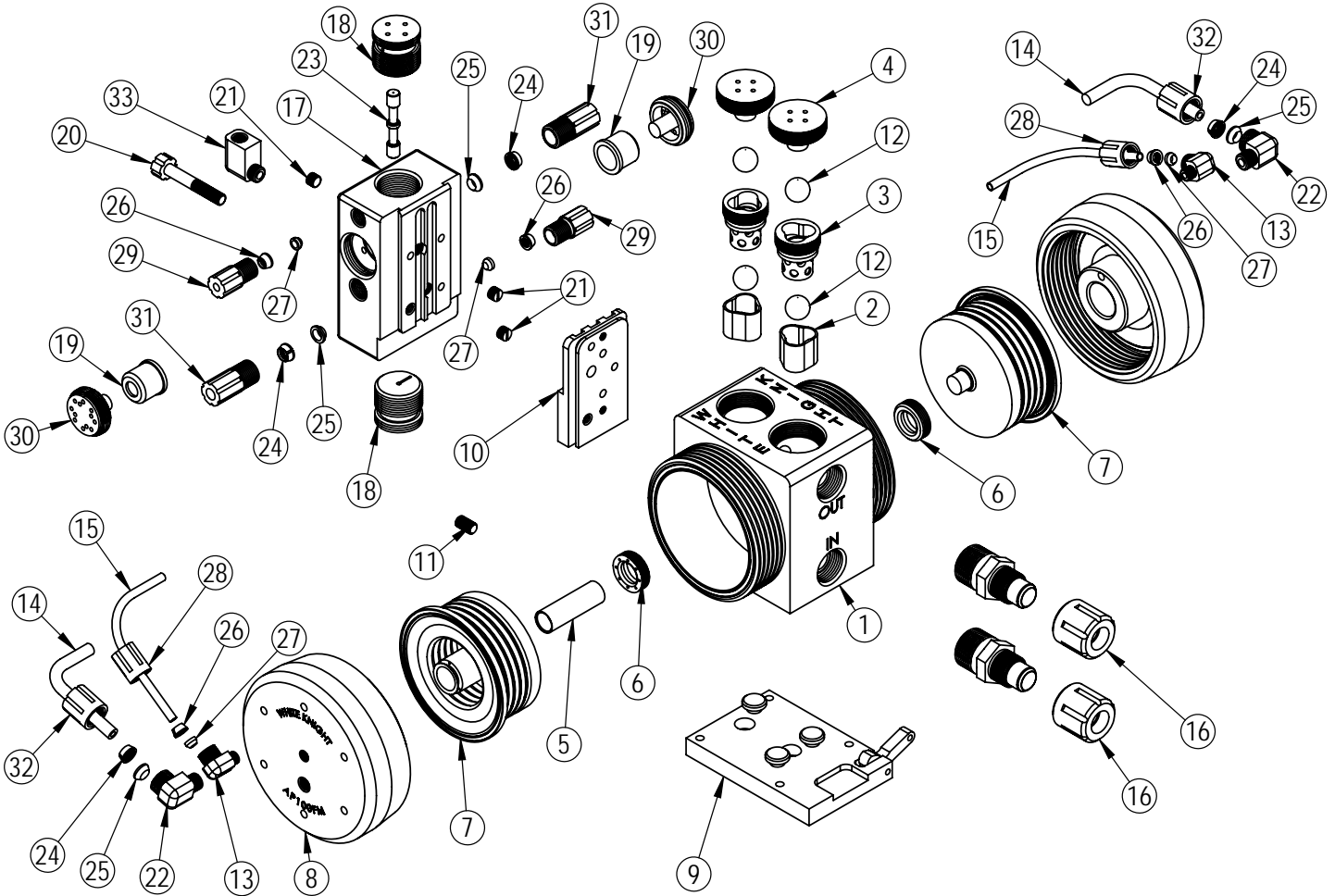




AP100FM Exploded View

AP100FM pumps are legacy models. We recommend users consider PSH060 pumps, which provide better performance, increased flow rates, higher pressure capabilities, improved reliability, extended pump life and warranty periods, as well as shorter lead times. Details: <https://wkfluidhandling.com/psh-series/>



AP100 FM BILL OF MATERIALS							
ITEM NO.	PART NUMBER	DESCRIPTION	QTY.	ITEM NO.	PART NUMBER	DESCRIPTION	QTY.
1	1125-TE-0003	PUMP BODY	1	18	6530-TE-0002	SHUTTLE END PLUG	2
2	4135-TE-0002	BOTTOM CHECK SEAT	2	19	6140-TE-0002	WHISPER MUFFLER	2
3	4142-TE-0003	TOP CHECK CAGE	2	20	10010-TE-0005	SHUTTLE SET SCREW	1
4	4140-TE-0002	TOP CHECK PLUG	2	21	10040-TE-0002	PLUG, NPT, 1/8"	3
5	5144-PF-0002	SHAFT	1	22	6020-TE-0004	1/4" NPT x 3/8" GRIPPER ELBOW	2
6	5143-TE-0003	SHAFT SEAL	2	23	6560-CE-0002	SHUTTLE SPOOL	1
7	14300-PF-0002	BELLOWS ASSEMBLY	2	24	6080-KF-0002	GRIPPER, 3/8"	4
8	2127-TE-0004	FM PUMP HEAD	2	25	6080-TE-0002	FERRULE, 3/8"	4
9	14200-NP-0002	BASE PLATE ASSEMBLY	1	26	6080-KF-0001	GRIPPER, 1/4"	4
10	6520-TE-0002	SHUTTLE ADAPTER PLATE	1	27	6080-TE-0001	FERRULE, 1/4"	4
11	10010-TE-0008	ADAPTER PLATE SCREW	1	28	6070-TE-0001	FEMALE GRIPPER NUT, 1/4"	2
12	4100-TE-0002	CHECK BALL	4	29	6070-TE-0004	MALE GRIPPER NUT, 1/4"	2
13	6030-TE-0001	1/8" NPT x 1/4" GRIPPER ELBOW	2	30	6150-TE-0002	WHISPER MUFFLER CAP	2
14	10071-PF-0010	3/8" TUBING	2	31	6070-TE-0005	NUT, GRIPPER, MALE, 3/8"	2
15	10071-PF-0001	THICK-WALL TUBING, 1/4"	2	32	6070-TE-0002	NUT, GRIPPER, FEMALE, 3/8"	2
16	14510-TE-0005	1" FLARE ASSEMBLY	2	33	6010-TE-0006	1/4" NPT x 1/4" FNPT ELBOW	1
17	14400-TE-0004	SHUTTLE BODY AND SLEEVE	1				

<https://wkfluidhandling.com/ap-fm-series/>

