

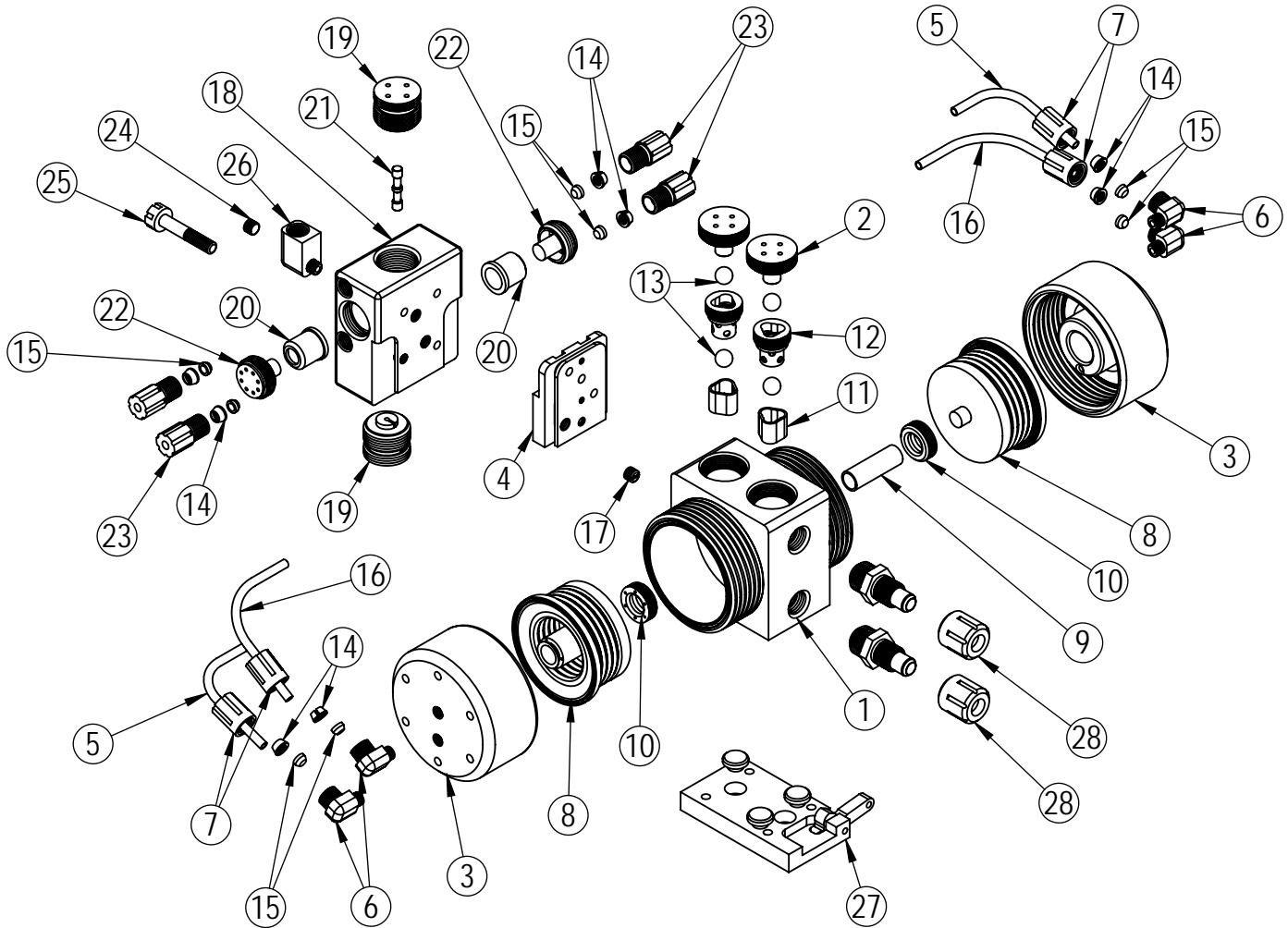


WHITE KNIGHT
.....engineer approved™

PUMP EXPLODED VIEW

AP50 Exploded View

AP50 pumps are legacy models. We recommend users consider PSA030 pumps, which provide better performance, increased flow rates, higher pressure capabilities, improved reliability, extended pump life and warranty periods, as well as shorter lead times. Details: <https://wkfluidhandling.com/psa-series/>



AP50 BILL OF MATERIALS							
ITEM NO.	PART NUMBER	DESCRIPTION	QTY.	ITEM NO.	PART NUMBER	DESCRIPTION	QTY.
1	1125-TE-0002	PUMP BODY	1	15	6080-TE-0001	FERRULE, 1/4"	8
2	4140-TE-0001	TOP CHECK PLUG	2	16	10071-PF-0009	TUBING, 1/4"	2
3	2127-BP-0001	HEAD, AP50	2	17	10010-BP-0004	ADAPTER BASE PLATE SCREW	1
4	6520-BP-0001	SHUTTLE ADAPTER PLATE	1	18	14400-BP-0002	SHUTTLE BODY AND SLEEVE	1
5	10071-PF-0008	TUBING, THICK WALL, 1/4"	2	19	6530-BP-0002	SHUTTLE END CAP	2
6	6030-BP-0001	1/8" NPT X 1/4" GRIPPER ELBOW	4	20	6140-TE-0001	Whisper@Muer	2
7	6070-BP-0001	FEMALE GRIPPER NUT, 1/4"	4	21	6560-CE-0001	SHUTTLE SPOOL	1
8	14300-PF-0001	BELLOWS ASSEMBLY	2	22	6150-BP-0001	WHISPER MUFFLER CAP	2
9	5144-PF-0001	SHAFT	1	23	6070-BP-0005	MALE GRIPPER NUT, 1/4"	4
10	5143-TE-0001	SHAFT SEAL	2	24	10040-TE-0002	PLUG, NPT, 1/8"	1
11	4135-TE-0001	BOTTOM CHECK SEAT	2	25	10010-BP-0001	SCREW, SET, SHUTTLE	1
12	4142-TE-0002	TOP CHECK SEAT	2	26	6010-BP-0002	ELBOW, 1/8" NPT x 3/8" FNPT	1
13	4100-TE-0001	BALL, CHECK, 1/2"	4	27	14200-NP-0001	BASE PLATE ASSEMBLY	1
14	6080-KF-0001	GRIPPER, 1/4"	8	28	14510-NP-0001	1/2" FLARE ASSEMBLY	2

<https://wkfluidhandling.com/ap-series/>

