



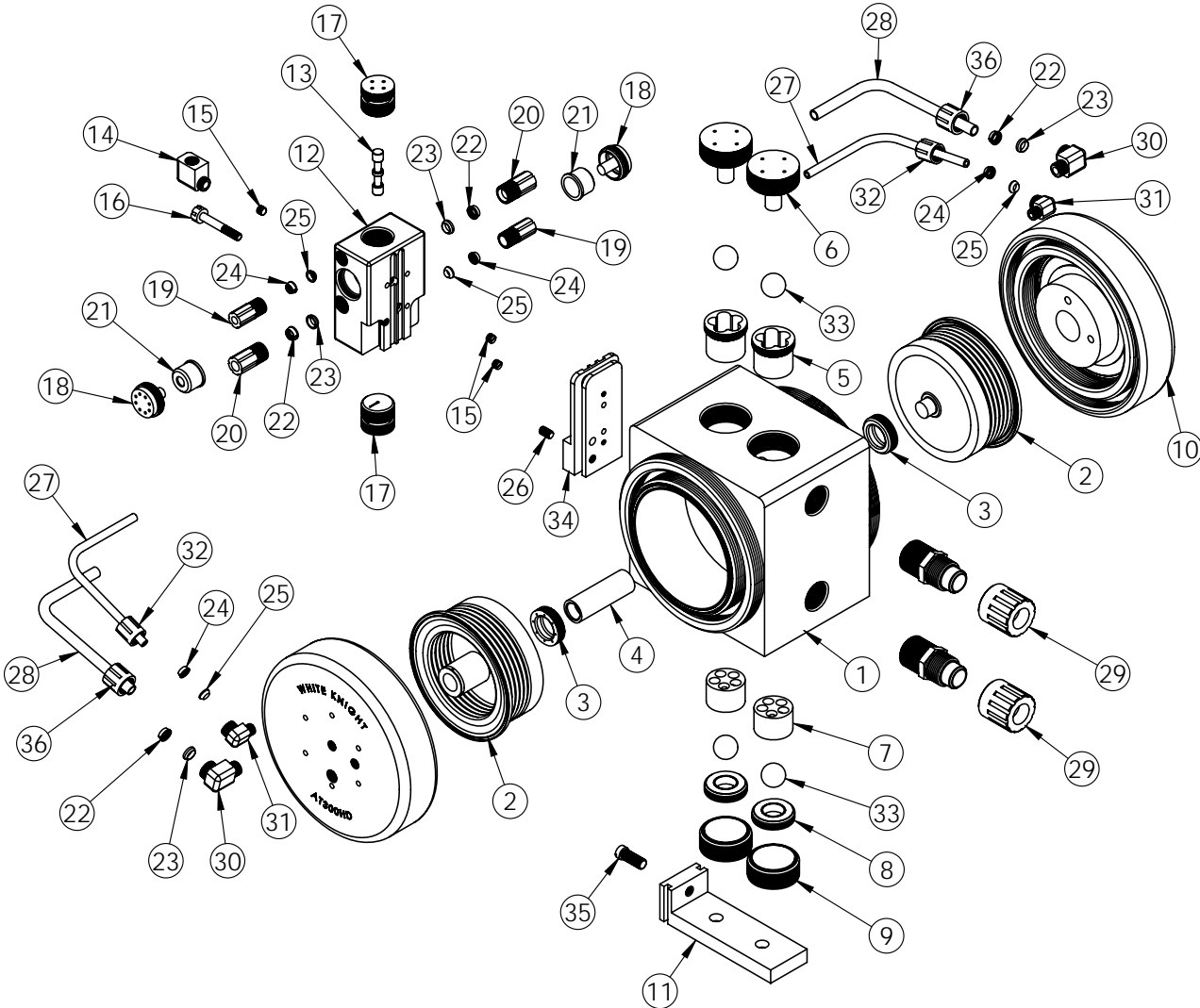
WHITE KNIGHT®

.....engineer approved™

PUMP EXPLODED VIEW

AT300HD Exploded View

AT300HD pumps are discontinued legacy models. We recommend users consider PSU140 pumps, which provide better performance, increased flow rates, higher pressure capabilities, improved reliability, extended pump life and warranty periods, as well as shorter lead times. Details: <https://wkfluidhandling.com/psu-series/> Discontinued 31 Dec 2015. Supported to 31 Dec 2020.



AT300HD BILL OF MATERIALS

ITEM NO.	PART NUMBER	DESCRIPTION	QTY.	ITEM NO.	PART NUMBER	DESCRIPTION	QTY.
1	1125-TE-0009	PUMP BODY	1	19	6070-TE-0005	3/8" MALE GRIPPER NUT	2
2	14300-MP-0008	BELLOWS ASSEMBLY	2	20	6070-TE-0006	1/2" MALE GRIPPER NUT	2
3	5143-TE-0005	SHAFT SEAL	2	21	6140-TE-0003	WHISPER MUFFLER	2
4	5144-PF-0008	SHAFT	1	22	6080-KF-0003	1/2" GRIPPER	4
5	4142-TE-0008	TOP CHECK CAGE	2	23	6080-TE-0003	1/2" FERRULE	4
6	4140-TE-0007	PLUG, CHECK	2	24	6080-KF-0002	3/8" GRIPPER	4
7	4137-TE-0003	CAGE, CHECK	2	25	6080-TE-0002	3/8" FERRULE	4
8	4135-TE-0009	BOTTOM CHECK SEAT	2	26	10010-TE-0008	ADAPTER PLATE SCREW	1
9	4139-TE-0003	BOTTOM CHECK PLUG	2	27	10071-PF-0010	TUBING 3/8"	2
10	2127-TE-0010	PUMP HEAD	2	28	10071-PF-0011	TUBING 1/2"	2
11	1146-TE-0005	BASE PLATE	1	29	14510-TE-0007	FLARE ASSEMBLY	2
12	14400-TE-0007	SHUTTLE BODY AND SLEEVE	1	30	6020-TE-0005	3/8" NPT X 1/2" GRIPPER ELBOW	2
13	6560-CE-0003	SHUTTLE SPOOL	1	31	6020-TE-0004	1/4" NPT X 3/8" GRIPPER ELBOW	2
14	6010-TE-0007	3/8" NPT x 3/8" FNPT ELBOW	1	32	6070-TE-0002	3/8" FEMALE GRIPPER NUT	2
15	10040-TE-0002	1/8" NPT Plug	3	33	4100-TE-0004	CHECK BALL	4
16	10010-TE-0009	SHUTTLE SET SCREW	1	34	6520-TE-0005	SHUTTLE ADAPTER PLATE	1
17	6530-TE-0003	SHUTTLE END CAP	2	35	10010-TE-0010	BASE PLATE SCREW	1
18	6150-TE-0003	WHISPER MUFFLER CAP	2	36	6070-NP-0003	1/2" FEMALE GRIPPER NUT	2

<https://wkfluidhandling.com/at-series/>

