



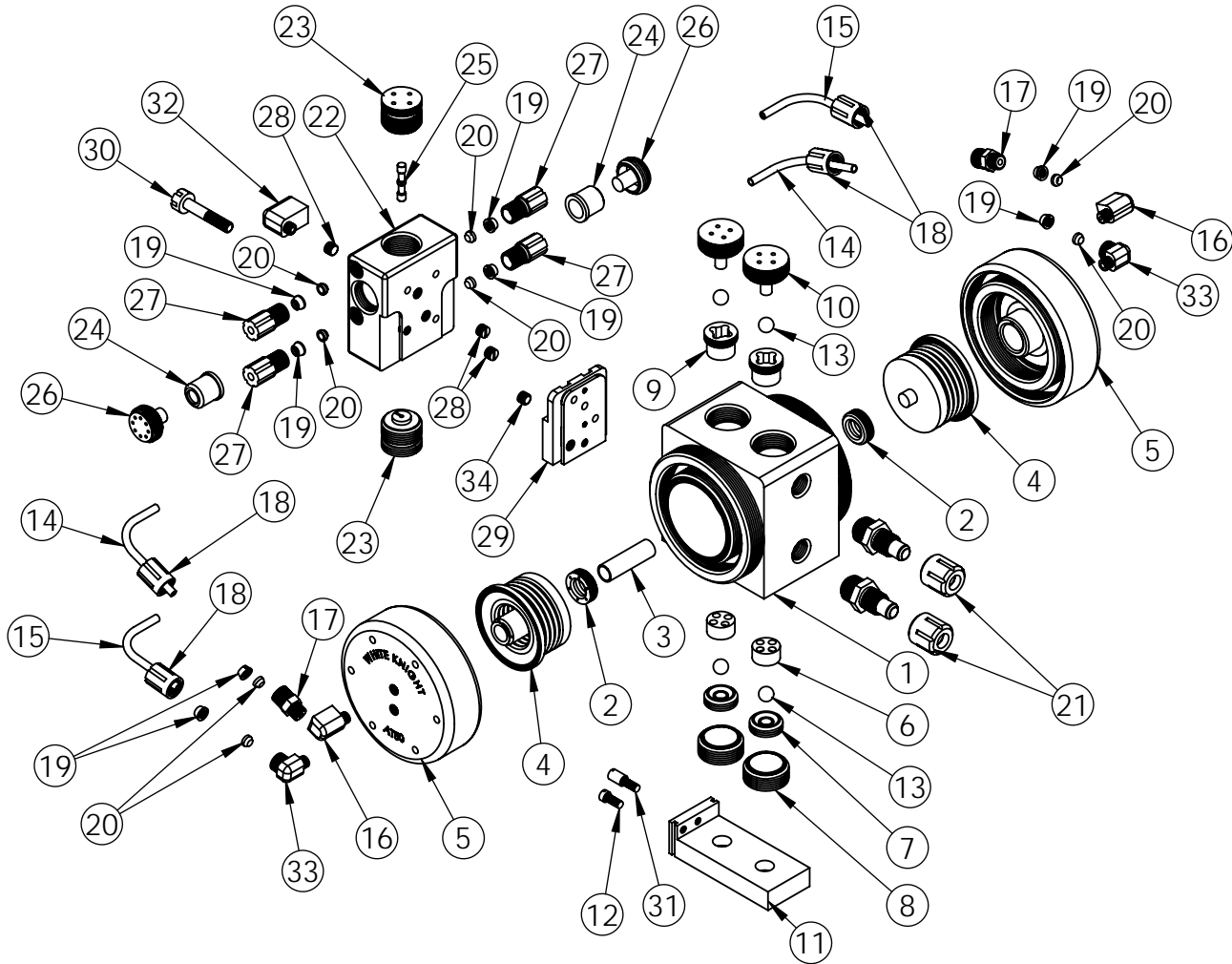
WHITE KNIGHT®

.....engineer approved™

PUMP EXPLODED VIEW

AT50 Exploded View

AT50 pumps are discontinued legacy models. We recommend users consider PSU030 pumps, which provide better performance, increased flow rates, higher pressure capabilities, improved reliability, extended pump life and warranty periods, as well as shorter lead times. Details: <https://wkfluidhandling.com/psu-series/> Discontinued 31 Dec 2016. Supported to 31 Dec 2021.



| AT50 BILL OF MATERIALS | | | | | | | |
|------------------------|---------------|----------------------------------|------|----------|---------------|-------------------------------|------|
| ITEM NO. | PART NUMBER | DESCRIPTION | QTY. | ITEM NO. | PART NUMBER | DESCRIPTION | QTY. |
| 1 | 1125-TE-0006 | PUMP BODY | 1 | 18 | 6070-TE-0001 | 1/4" GRIPPER AIRNUT | 4 |
| 2 | 5143-TE-0001 | SHAFT SEAL | 2 | 19 | 6080-KF-0001 | 1/4" GRIPPER | 8 |
| 3 | 5144-PF-0005 | SHAFT | 1 | 20 | 6080-TE-0001 | 1/4" FERRULE | 8 |
| 4 | 14300-PF-0005 | BELLOWS ASSEMBLY | 2 | 21 | 14510-TE-0002 | Flaretek® Compatible Assembly | 2 |
| 5 | 2127-TE-0007 | PUMP HEAD | 2 | 22 | 14400-TE-0002 | SHUTTLE BODY AND SLEEVE | 1 |
| 6 | 4137-TE-0001 | CAGE CHECK | 2 | 23 | 6530-TE-0001 | SHUTTLE END CAP | 2 |
| 7 | 4135-TE-0007 | BOTTOM CHECK SEAT | 2 | 24 | 6140-TE-0001 | Whisper® Mu er | 2 |
| 8 | 4139-TE-0001 | BOTTOM CHECK PLUG | 2 | 25 | 6560-CE-0001 | SHUTTLE SPOOL | 1 |
| 9 | 4142-TE-0006 | TOP CHECK SEAT | 2 | 26 | 6150-TE-0001 | Whisper® Mu er Cap | 2 |
| 10 | 4140-TE-0005 | PLUG, CHECK | 2 | 27 | 6070-TE-0004 | 1/4" MALE GRIPPER NUT | 4 |
| 11 | 1146-TE-0004 | BASE PLATE-5GPM | 1 | 28 | 10040-TE-0002 | 1/8" NPT Plug | 3 |
| 12 | 10010-TE-0002 | BASE PLATE SCREW | 1 | 29 | 6520-TE-0001 | SHUTTLE ADAPTER PLATE | 1 |
| 13 | 4100-TE-0001 | BALL, CHECK, 1/2" | 4 | 30 | 10010-TE-0001 | SHUTTLE SET SCREW | 1 |
| 14 | 10071-PF-0008 | THICK-WALL TUBING, 1/4" | 2 | 31 | 10010-TE-0003 | BASE PLATE SCREW LONG | 1 |
| 15 | 10071-PF-0009 | THIN-WALL TUBING, 1/4" | 2 | 32 | 6010-TE-0002 | 1/8" NPT x 1/4" NPT ELBOW | 1 |
| 16 | 6010-TE-0009 | 1/8" NPT x 1/4" FNPT ELBOW | 2 | 33 | 6030-TE-0001 | 1/8" NPT X 1/4" GRIPPER ELBOW | 2 |
| 17 | 6060-TE-0001 | 1/4" NPT x 1/4" GRIPPER STRAIGHT | 2 | 34 | 10010-TE-0004 | ADAPTER PLATE SCREW | 1 |

<https://wkfluidhandling.com/at-series/>

