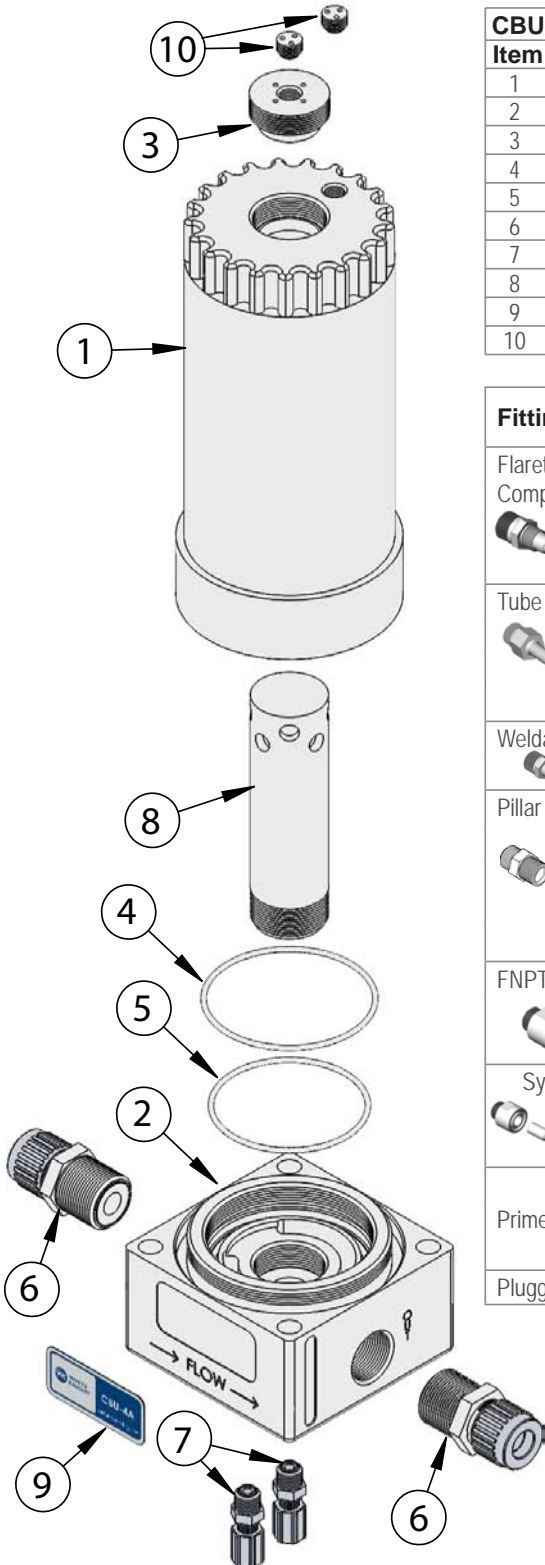


CBU-4A Exploded View



CBU-4A BILL OF MATERIALS			
Item	Part Number	Description	Qty
1	11100-TE-0008	Filter Housing Body	1
2	11100-TE-0010	High-temp Debubbler Housing	1
3	10040-TE-0032	Cap, High-temp Debubbler	1
4	10080-XX-244	-244 FEP-encapsulated O-ring	1
5	10080-XX-241	-241 FEP-encapsulated O-ring	1
6	14530-PF-0006	3/4" Super Pillar 300 Fitting Assembly	2
7	14510-PF-0012	1/4" Flaretek, Liquid Fitting Assembly	2
8	7120-TE-0004	Dip Tube, High-temp Debubbler	1
9	19100-PP-0152	Product Label	1
10	7130-TE-0006	04 WK 1/4" Fluid Port Plug	2

Fittings (Type, Size, Option)			Assemblies	Body Inlet Only (Nut not included)
 Flaretek Compatible	1/2 in.	F08	14510-PF-0011	7200-PF-0015
	3/4 in.	F12	14510-PF-0008	7200-PF-0009
	1 in.	F16	14510-PF-0009	7200-PF-0010
	1-1/4 in.	F20	14510-PF-0010	7200-PF-0011
 Tube Out	3/4 in.	T12	7120-PF-0007	
	1 in.	T16	7120-PF-0008	
	1-1/4 in.	T20	7120-PF-0009	
	1-1/2 in.	T24	7120-PF-0010	
 Weldable	3/4 in.	W12	7300-PF-0005	
	1 in.	W16	7300-PF-0006	
 Pillar S-300	1/2 in.	P08	14530-PF-0011	7400-TE-0019
	3/4 in.	P12	14530-PF-0006	7400-TE-0006
	1 in.	P16	14530-PF-0007	7400-TE-0007
	1-1/4 in.	P20	14530-PF-0008	7400-TE-0008
	1-1/2 in.	P24	14530-PF-0026	7400-TE-0035
 FNPT	3/4 in.	N12	7100-TE-0009	
	1 in.	N16	7100-TE-0005	
	1-1/4 in.	N20	7100-TE-0010	
 Synchro-Flare	1/2 in.	S08	TBD	7010-TE-0008
	3/4 in.	S12	14520-TE-0008	7010-TE-0007
	1 in.	S16	14520-TE-0007	7010-TE-0009
PrimeLock	3/4 in.	L12	14570-PF-0006	7800-TE-0006
	1 in.	L16	14570-PF-0007	7800-TE-0007
	1-1/4 in.	L20	7800-PF-0008	7800-TE-0008
Plugged		B00	7130-TE-0005	

<https://wkfluidhandling.com/cbu-series/>