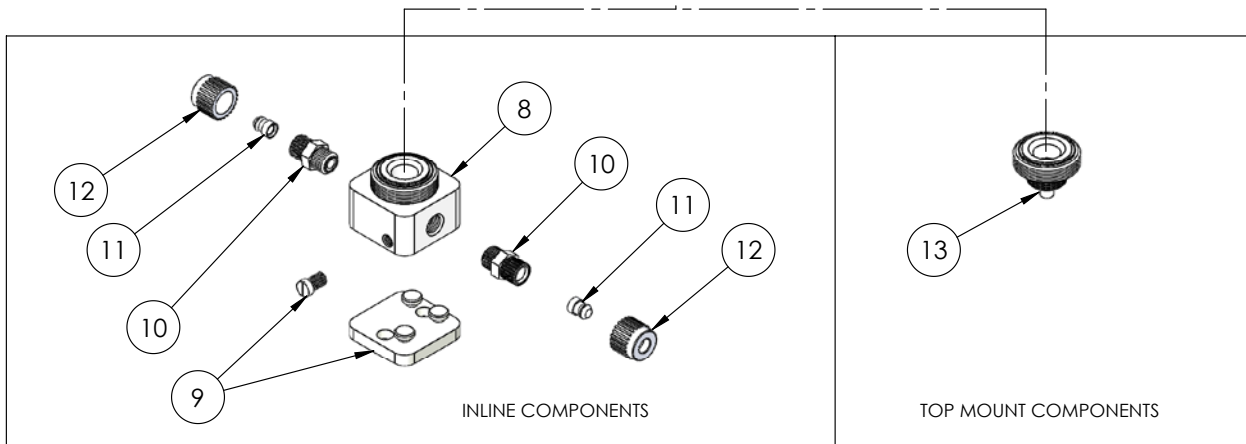
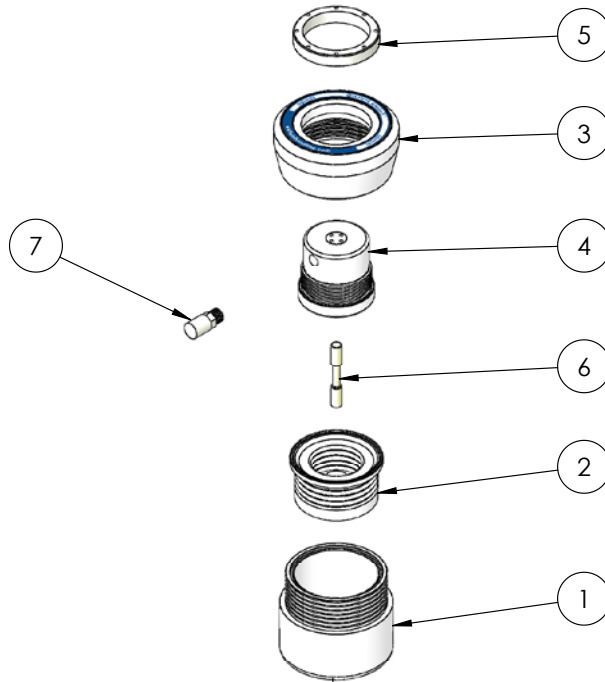


DBH030 Exploded View



| DBH030 BILL OF MATERIALS | | | |
|--------------------------|---------------|-------------------------|------|
| ITEM NO. | PART NUMBER | DESCRIPTION | QTY. |
| 1 | 9400-TE-0001 | BODY, DAMPENER | 1 |
| 2 | 14300-MP-0032 | BELLOWS ASSEMBLY | 1 |
| 3 | 2127-TE-0060 | HEAD DBH030 | 1 |
| 4 | 14860-XX-0001 | PD AIR MOTOR ASSEMBLY | 1 |
| 5 | 9300-TE-0006 | RING, RETAINING | 1 |
| 6 | 6560-CE-0005 | SPOOL | 1 |
| 7 | 6110-PP-0004 | MUFFLER | 1 |
| 8 | 9100-TE-0008 | BASE, INLINE, 030 | 1 |
| 9 | 14200-NP-0009 | BASEPLATE ASSEMBLY | 1 |
| 10 | 7400-TE-0001 | BODY, S-300°, 1/2" | 2 |
| 11 | 7400-PF-0001 | INSERT, S-300°, 1/2" | 2 |
| 12 | 7400-PF-0005 | NUT, S-300°, 1/2" | 2 |
| 13 | 9200-TE-0008 | ADAPTER, TOP MOUNT, 030 | 1 |

<https://wkfluidhandling.com/dbh-series/>