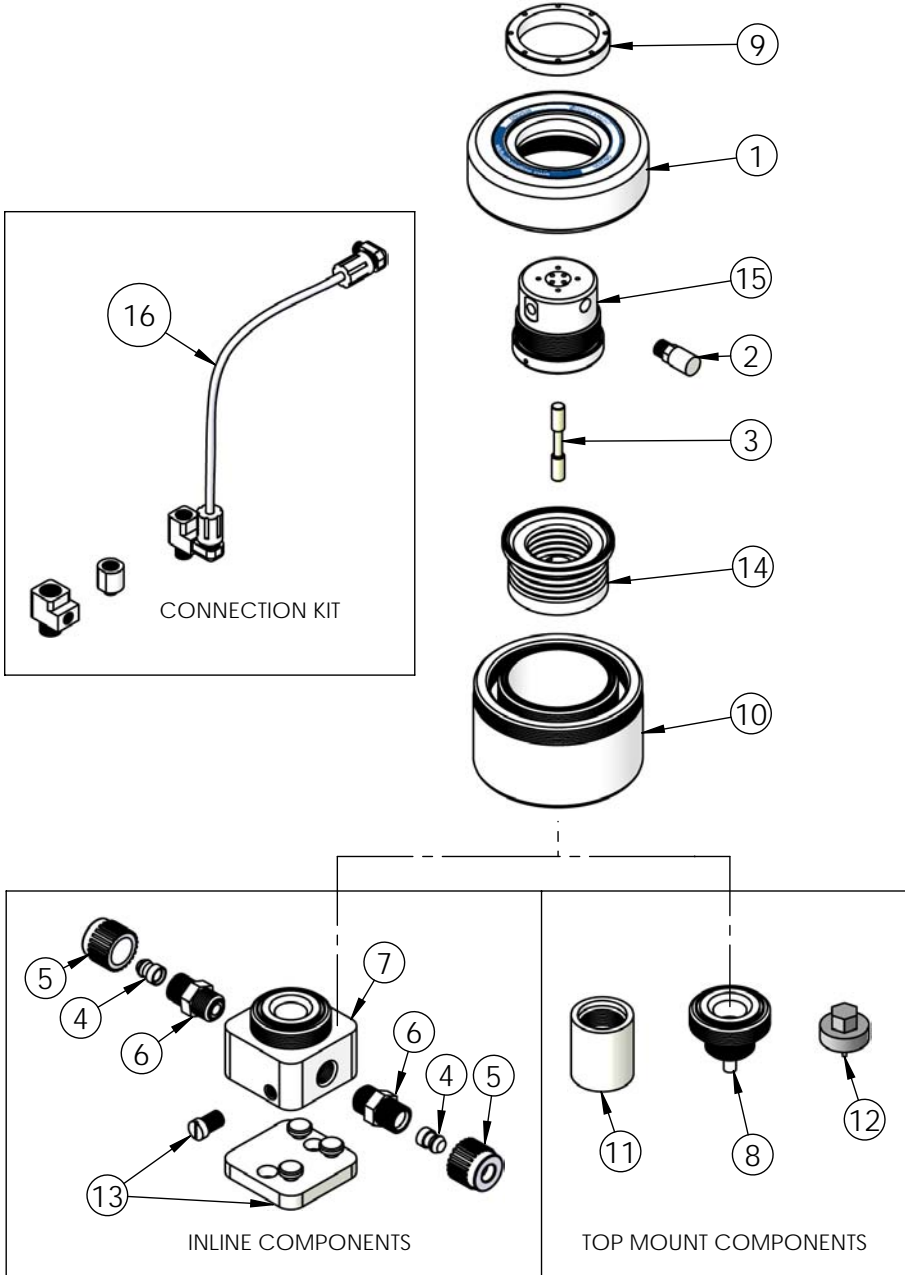


DBU030 Exploded View



DBU030 BILL OF MATERIALS			
Item	Part	Description	Qty
1	2127-TE-0071	Head	1
2	6110-PP-0004	Muffler	1
3	6560-CE-0005	SPOOL	1
4	7400-PF-0001	Insert, S-300®, 1/2"	2
5	7400-PF-0005	Nut, S-300®, 1/2"	2
6	7400-TE-0001	Body, S-300®, 1/2"	2
7	9100-TE-0008	Inline Base	1
8	9200-TE-0011	Top Mount Adapter	1
9	9300-TE-0006	Retaining Ring	1
10	9400-TE-0004	Body	1
11	9500-NP-0004	Dust Cover / Tool	1
12	12100-PV-0041	Torque Wrench Adapter	1
13	14200-NP-0009	Baseplate Assembly	1
14	14300-MP-0032	Bellows Assembly	1
15	14860-XX-0002	Pd Air Motor Assembly	1
16	14870-TE-0001	Connection Kit	1

Fittings (Type, Size, Option)		Assemblies	Body Inlet Only (Nut not included)	
Flaretek Compatible	1/4 in. F04	14510-PF-0016	7200-PF-0001	
	3/8 in. F06	14510-PF-0001	7200-PF-0002	
	1/2 in. F08	14510-PF-0002	7200-PF-0003	
	3/4 in. F12	14510-PF-0003	7200-PF-0004	
Tube Out	3/8 in. T06	7120-PF-0001		
	1/2 in. T08	7120-PF-0002		
	3/4 in. T12	7120-PF-0003		
Weldable	1/2 in. W08	7300-PF-0001		
	3/4 in. W12	7300-PF-0002		
Pillar S-300	1/4 in. P04	14530-PF-0025	7400-TE-0031	
	3/8 in. P06	14530-PF-0012	7400-TE-0023	
	1/2 in. P08	14530-PF-0001	7400-TE-0001	
	3/4 in. P12	14530-PF-0002	7400-TE-0002	
FNPT	1/4 in. N04	7100-TE-0001		
	3/8 in. N06	7100-TE-0002		
	1/2 in. N08	7100-TE-0003		
	3/4 in. N12	7100-TE-0007		
Synchro-Flare	3/8 in. S06	14520-TE-0009	7010-TE-0001	
	1/2 in. S08	14520-TE-0001	7010-TE-0003	
	3/4 in. S12	14520-TE-0002	7010-TE-0002	
PrimeLock	1/4 in. L04	14570-PF-0013	7800-TE-0013	
	3/8 in. L06	14570-PF-0014	7800-TE-0014	
	1/2 in. L08	14570-PF-0001	7800-TE-0001	
	3/4 in. L12	14570-PF-0002	7800-TE-0002	
Plugged	B00	7130-TE-0001		