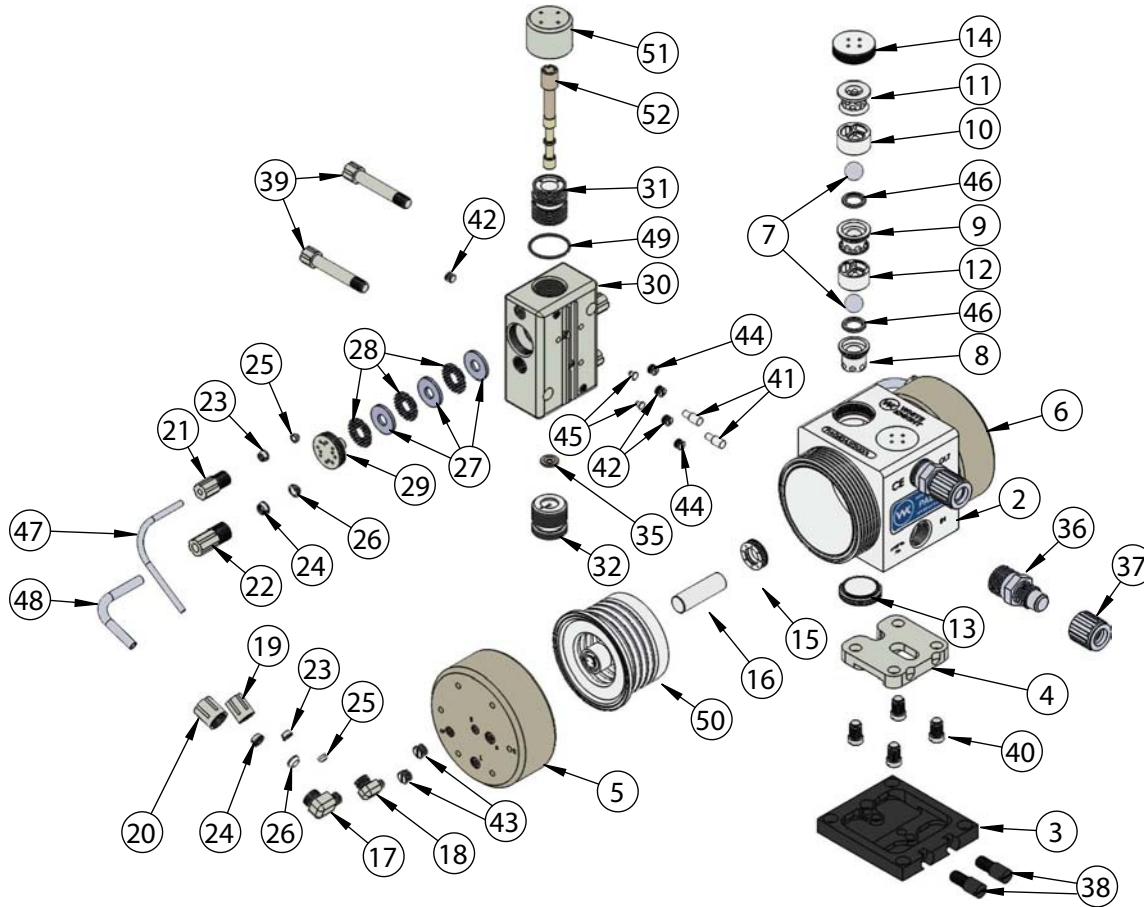


PA060 Exploded View



PA060 BILL OF MATERIALS			
Item	Part	Description	Qty
1	19100-PP-0147	Product Label	1
2	1125-TE-0035	Pump Body	1
3	1146-BP-0009	Base Plate, Quick Change	1
4	1146-NP-0045	Adapter Plate 60L Low Cav	1
5	2127-EP-0012	Head Right	1
6	2127-EP-0013	Head Left	1
7	4100-PF-0001	Check Ball 3/4" PFA	4
8	4137-TE-0015	Bottom Wear Seat/diffuser 60L Low Cav	2
9	4137-TE-0016	Middle Wear Seat/diffuser 60L Low Cav	2
10	4137-TE-0017	Check Cage, Top, 60L Low Cav	2
11	4137-TE-0018	Top Diffuser, 60L Low Cav	2
12	4137-TE-0019	Check Cage, Bottom, 60L Low Cav	2
13	4139-TE-0014	Plug, Bottom Check, 60L Low Cav	2
14	4140-TE-0011	Plug, Top Check, 60L Low Cav	2
15	5143-MP-0012	Seal, Shaft, 60L	2
16	5144-PF-0023	Shaft, Solid, Pfa, 60L	1
17	6020-NP-0001	1/4" NPT X 3/8" Gripper Elbow	2
18	6030-NP-0001	1/8" NPT X 1/4" Gripper Elbow	2
19	6070-NP-0001	Nut, Gripper, 1/4"	2
20	6070-NP-0002	Nut Female Gripper 3/8"	2
21	6070-NP-0004	1/4" Male Gripper Nut	2
22	6070-NP-0006	3/8"-male Gripper Nut	2
23	6080-KF-0001	1/4" Gripper	4
24	6080-KF-0002	3/8" Gripper	4
25	6080-TE-0001	1/4" Ferrule	4
26	6080-TE-0002	3/8" Ferrule	4
27	6140-FP-0004	Baffle Porous Poly 60L	6
28	6140-PP-0002	Mesh, Shuttle, 60L & 140L	6
29	6150-NP-0005	Cap, Muffler, Shift 50/60L	2
30	6510-NP-0005	Shuttle Body, Shift 50/60L	1
31	6530-TE-0009	60L Shuttle End Plug For Magnet Detent	1
32	6530-TE-0010	60L Shuttle End Plug For Magnet Detent With Bumper	1
33	6540-NP-0004	Air Restrictor, .049 Orifice	2
34	6550-CE-0003	30 gpm Sleeve	1
35	6570-PK-0006	Shuttle Spool Bumper	1
36	7200-PF-0006	Body, Flaretek, 3/4"	2
37	7210-PF-0004	3/4" Flaretek Nut (PFA)	2
38	10010-BP-0011	Base Plate Screw	2
39	10010-NP-0006	Set Screw 60L, & 140L	2
40	10010-NP-0012	1/2-16 x .700 Cap Screw	4
41	10020-NP-0003	Shuttle Pin	2
42	10040-TE-0002	1/8" NPT Plug	3
43	10040-TE-0003	NPT Plug - 1/4"	4
44	10040-TE-0015	1/8" NPT Plug (.040 Orifice)	2
45	10040-TE-0031	60L Shuttle Plug	2
46	10050-PF-0001	D-ring PA060	4
47	10071-PF-0008	1/4" Shift Air Line (Thick Wall)	2
48	10071-PF-0010	3/8" PFA Tubing	2
49	10080-VI-129-70	129 O-ring	2
50	14300-PF-0009	Bellows Assembly, Spacers, 60L	2
51	14440-XX-0001	60/140L Magnet Detent Shuttle Cap Assembly	1
52	14850-XX-0002	Magnet Detent Spool	1
53	19100-PP-0005	Pump Patent Sticker	1
54	6530-NP-0005	60/140L Shuttle Detent Bottom Cap	1

<https://wkfluidhandling.com/pa-series/>