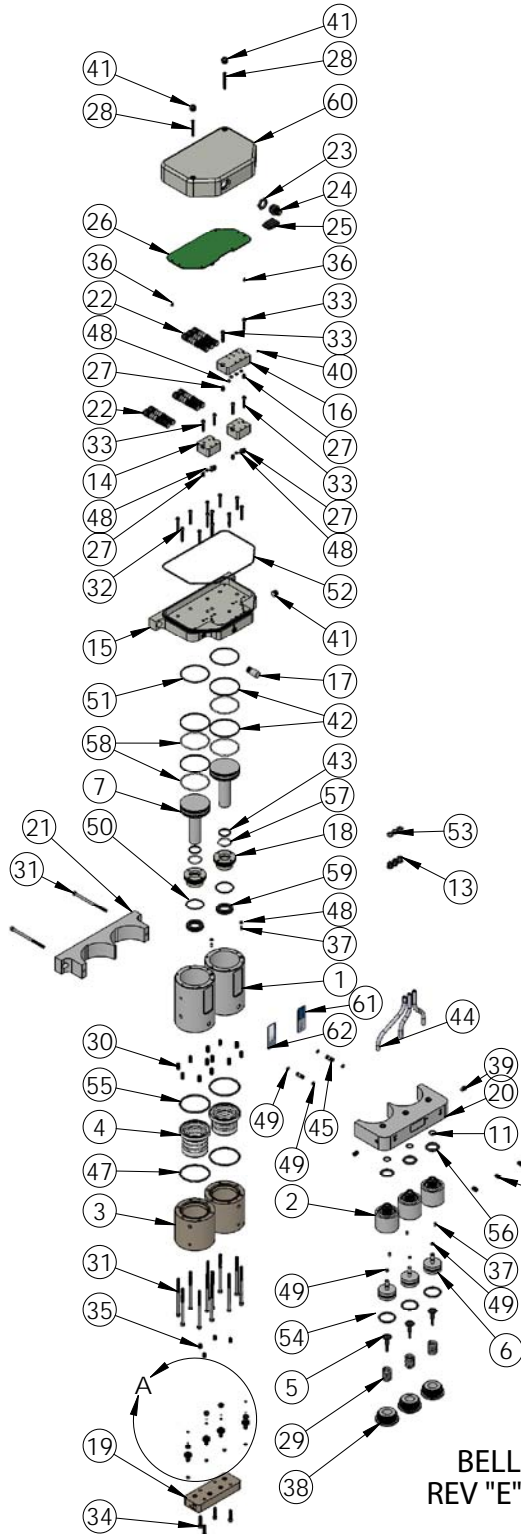
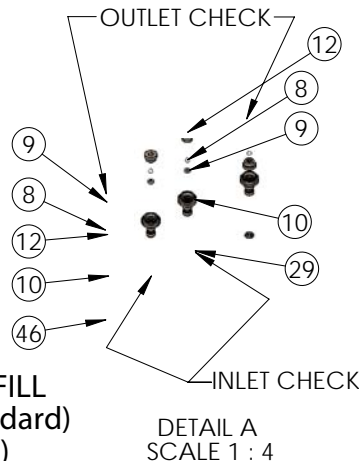


## PHC40 Exploded View



ITEM NO.	PART NUMBER	DESCRIPTION	QTY.
1	1125-PT-0001	BODY, HI-PRESSURE, 10ML	2
2	1126-PT-0001	HIGH PRESSURE VALVE AIRBODY	3
3	2127-PK-0001	HEAD, HI-PRESSURE, 10ML	2
4	3130-MP-0043	BELLOWS, PHC40	2
5	3135-BP-0002	HIGH PRESSURE VALVE SENSOR PISTON	3
6	3135-PT-0001	HIGH PRESSURE VALVE PISTON	3
7	3135-PT-0002	PISTON, HI-PRESSURE, 10ML	2
8	4100-SP-0001	1/8" CHECK BALL, SAPPHIRE	4
9	4135-SP-0001	SEAT, 1/8", SAPPHIRE	4
10	4140-PK-0002	PLUG, MANIFOLD, BALLCHECK, HI-PRESSURE, INLET/OUTLET	4
11	4143-PF-0001	HIGH PRESSURE DIAPHRAGM SEAT/SEAL	3
12	4143-PK-0001	HI-PRESSURE CHECK	4
13	6080-PP-0001	GRIPPER, .250, ONE-TOUCH	6
14	6091-NP-0010	MANIFOLD, BULLET-2, PHC40-2	2
15	6091-NP-0011	CAP, BRACKET, PHC40-2 BR	1
16	6091-NP-0013	MANIFOLD, BULLET-3, PHC40-2	1
17	6110-PP-0003	POLY PRO MUFFLER 1/8" PORT SIZE	1
18	6600-PT-0002	PISTON, O-RING SLEEVE, PHC40-2	2
19	7500-PK-0003	MANIFOLD, PHC40-2 (Metric M6 FB)	1
20	7500-PT-0001	MANIFOLD, BR, VALVES, METRIC	1
21	7500-PT-0003	MANIFOLD, BR, BRACKET	1
22	8600-XX-0028	VALVE, SOLENOID, BULLET, BV310A	7
23	8600-XX-0029	NUT, CABLE GRIPPER	1
24	8600-XX-0035	RECEPTACLE, TURCK, MALE	1
25	8600-XX-0044	PEM050 Quick Wire Connector, 6 Pin	1
26	8600-XX-0067	CONNECTION BOARD, PHC40-2, BAR	1
27	10010-SS-0011	INSERT, THREADED, 6-32 x .276	6
28	10010-SS-0037	SCREW, 1.250,	2
29	10010-SS-0044	SPRING	3
30	10010-SS-0045	INSERT, THREADED, 8-32 x .492	12
31	10010-SS-0046	SCREW, SH CAP, 8-32 X 3.00	14
32	10010-SS-0047	SCREW, SH CAP, 6-32 X 1.00 (full thread)	12
33	10010-SS-0053	SCREW, SH CAP, 6-32 X .750	6
34	10010-SS-0055	8-32 X .750 SH CAPSCREW	4
35	10010-SS-0056	8-32 x .328 threaded Insert	4
36	10010-SS-0057	2-28 PAN HEAD 3/16 LONG	2
37	10020-PK-0002	RESTRICTOR, .016 ORIFICE, PEM050	5
38	10040-PT-0001	HIGH PRESSURE VALVE CAP	3
39	10040-PT-0004	PLUG, 14-28 FB	5
40	10040-SS-0003	PLUG, BALL, 316 SS, 3/32"	1
41	10040-TE-0002	1/8" NPT Plug	3
42	10050-UH-0018	SEAL, GLIDE, 2.045 X .076, .032 O-RING	4
43	10050-UH-0021	SEAL, GLIDE, .819 O.D. x .076, .019 O-RING	2
44	10070-PF-0001	Tubing PFA 1/4" thickwall	1.5 ft.
45	10070-PT-0001	TUBE, TRANSFER, PHC40-2	2
46	10080-FF-006-75	O-RING 006 X .070 (Kalrez)	4
47	10080-FF-135-75	O-RING, 135 X .103 (Kalrez)	2
48	10080-VI-005-75	O-RING 005 x .070	12
49	10080-VI-006-75	.006 O-RING	7
50	10080-VI-024-75	-.024 O-RING	2
51	10080-VI-032-75	O-RING .032 X .070	2
52	10080-VI-050-75	O-RING .050 X .070	1
53	10080-VI-108-75	O-RING, 108 X .103	6
54	10080-VI-120-75	120 O-RING	3
55	10080-VI-135-75	O-RING, 135 X .103	2
56	10080-VI-209-75	209 O-RING, 75 DUROMETER	3
57	10080-WV-019-60	-.019 x .070 O-RING	2
58	10080-WV-032-60	O-RING, .032 X .070 (white)	4
59	10082-UR-0001	U-CUP SEAL, 750 X .188 X .188	2
60	10100-NP-0006	COVER, PHC40-2, BR	1
61	19100-PP-0110	LABEL, PRODUCT, PHC40	1
62	19100-PP-0111	Serial# Sticker for PHC40-2	1



PHC40-2  
BELLOWS AUTO-REFILL  
REV "E" ( metric /standard )  
(FKM/ FFKM )

DETAIL A  
SCALE 1 : 4

<https://wkfluidhandling.com/phc40/>