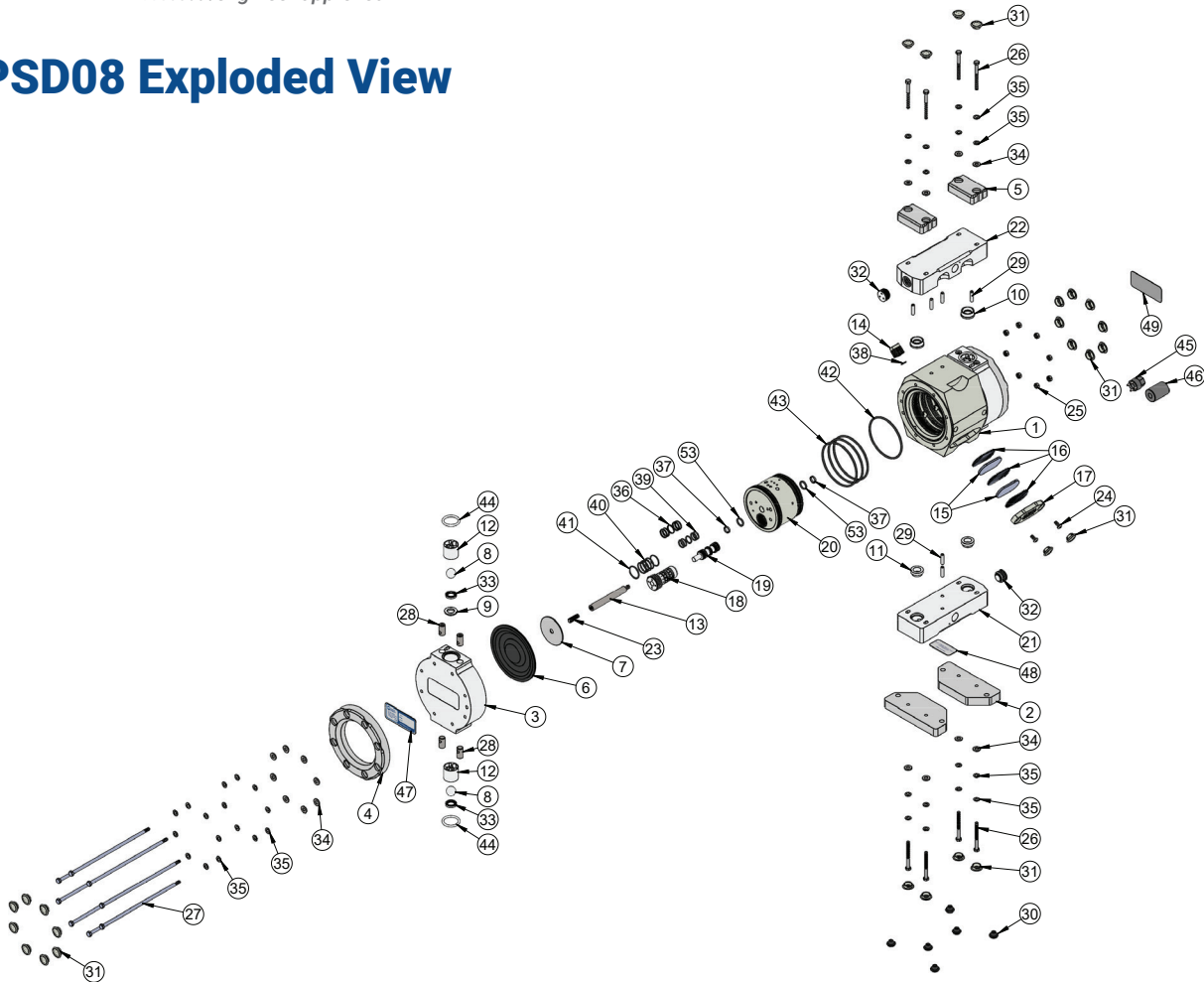


PSD08 Exploded View



ITEM NO.	PART NUMBER	DESCRIPTION	QTY.	ITEM NO.	PART NUMBER	DESCRIPTION	QTY.
1	1125-NP-0001	BODY	1	21_B	7500-UH-0005	INLET MANIFOLD, 1/2" BSPT	
2	1146-PV-0002	BASE PLATE	2	22_N	7500-TE-0002	OUTLET MANIFOLD, 1/2" NPT	1
3	2127-TE-0049	HEAD PSD08	2	22_B	7500-TE-0006	OUTLET MANIFOLD, 1/2" BSPT	
3	2127-UH-0001	HEAD PSD08		22_N	7500-UH-0002	OUTLET MANIFOLD, 1/2" NPT	
4	2129-PV-0001	HEAD RETAINER	2	22_B	7500-UH-0006	OUTLET MANIFOLD, 1/2" BSPT	
5	2129-PV-0002	MANIFOLD RETAINER	2	23	10010-SS-0006	THREADED STUD	2
6_E	3200-EM-0001	DIAPHRAGM PSD08	2	24	10010-SS-0010	SCREW	4
6_O	3200-TE-0001	DIAPHRAGM PSD08		25	10010-SS-0013	NUT	6
6_N	3200-BN-0001	DIAPHRAGM PSD08		26	10010-SS-0014	SCREW	8
7	3300-SS-0004	STRIKE PLATE PSD08	2	27	10010-SS-0106	TIE HEX BOLT	8
8_T	4100-TE-0002	CHECK BALL 3/4"	4	28	10011-SS-0002	MANIFOLD NUT	8
8_E	4100-EM-0001	CHECK BALL 3/4"		29	10020-WC-0001	GUIDE PIN	6
8_S	4100-SS-0001	CHECK BALL 3/4"		30	10040-NB-0001	FOOT RUBBER	6
8_N	4100-NB-0001	CHECK BALL 3/4"		31	10040-PE-0009	CAP PLUG	28
9	4135-TE-0011	WEARABLE SEAT, PSD08	2	32	10040-TE-0012	1/2" PLUG	2
9	4135-UH-0003	WEARABLE SEAT, PSD08		33	10050-MP-0002	D-RING	4
10	4135-TE-0013	TOP MANIFOLD WEAR SEAT	2	33	10050-UH-0005	D-RING	
10	4135-UH-0005	TOP MANIFOLD WEAR SEAT		34	10050-SS-0002	WASHER	24
11	4135-TE-0014	BOTTOM MANIFOLD WEAR SEAT	2	35	10050-SS-0005	WASHER, BELLEVILLE	48
11	4135-UH-0006	BOTTOM MANIFOLD WEAR SEAT		36	10050-UH-0003	GLIDE SEAL	10
12	4137-TE-0004	CHECK CAGE PSD08	4	37	10050-UH-0004	GLIDE SEAL	2
12	4137-UH-0001	CHECK CAGE PSD08		38	10080-EM-012-70	012 O-RING	1
13	5144-SS-0001	SHAFT	1	39	10080-EM-015-70	015 O-RING	10
14_N	6060-NP-0005	1/4" NPT INLET ADAPTER	1	40	10080-EM-020-70	020 O-RING	10
14_B	6060-NP-0006	1/4" BSPT INLET ADAPTER		41	10080-EM-022-70	022 O-RING	2
15	6140-FP-0006	BAFFLE	4	42	10080-EM-113-70	113 O-RING	2
16	6140-PP-0001	SPACER BAFFLE	6	43	10080-EM-238-70	238 O-RING	1
17	6150-NP-0009	MUFFLER CAP	2	44	10080-EM-240-70	240 O-RING	3
18	6550-PT-0001	SLEEVE	2	45	10080-TE-217	217 O-RING	4
19	6560-PT-0001	SPOOL	2	46	12100-PV-0030	SLEEVE WRENCH	1
20	6800-NP-0001	AIR MOTOR	1	47	12100-PV-0031	WEAR SEAT INSTALLATION TOOL	1
21_N	7500-TE-0001	INLET MANIFOLD, 1/2" NPT	1	48	19100-PP-0058	LABEL, CE FOR PSD08,16, AND 24	1
21_B	7500-TE-0005	INLET MANIFOLD, 1/2" BSPT		49	19100-PP-0124	PSD08/16/24 PATENT STICKER	1
21_N	7500-UH-0001	INLET MANIFOLD, 1/2" NPT		50	19100-PP-0037	LABEL, PRODUCT, PSD08	1
	PTFE Configuration						
	UHMW Configuration						

<https://wkfluidhandling.com/psd-series/>