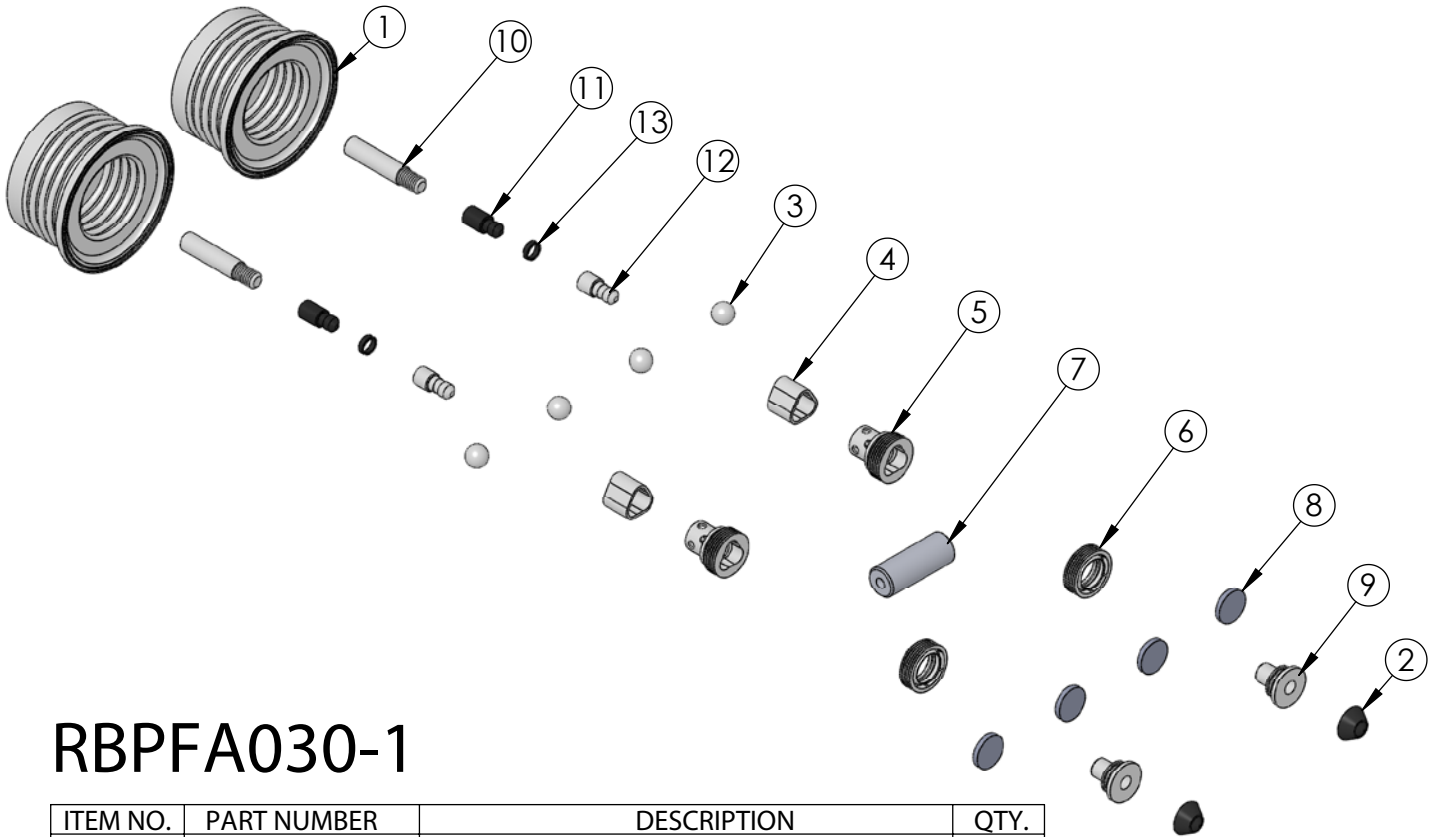


RBPFA030-1 Rebuild Kit

Rebuild kit for PFA030 pump is RBPFA030-1. Rebuild kit for dry-run PFASD030 pump is RBPFASD030-1. To request rebuilds by White Knight, use RBPFA030-5 or RBPFASD030-5. Contact White Knight for details. Pump rebuilds require tool kit: 12200-XX-0028 (Legacy# PFA030-170).

Note: Dry-run RBPFASD030-1 pump rebuild kits include different shaft and shaft seals.



RBPFA030-1

ITEM NO.	PART NUMBER	DESCRIPTION	QTY.
1	3130-MP-0025	BELLOWS, A & H, 30L	2
2	3200-VI-0001	DIAPHRAGM, ϕ .782	2
3	4100-MP-0004	CHECK BALL 1/2"	4
4	4135-MP-0006	CHECK SEAT BOTTOM HI-FLOW 25L & 30L	2
5	4142-MP-0004	CHECK CAGE TOP HI-FLOW 25L & 30L	2
6	5143-MP-0001	SEAL, SHAFT, 30L	2
7	5144-PF-0024	SHAFT, SOLID, PFA, 30L	1
8	6140-FP-0002	BAFFLE, .800"	4
9	6150-UH-0001	SEAT, QEV EXHAUST, 30L & 60L	2
10	8140-TE-0004	STEM, SD TARGET, 30L	2
11	8150-BP-0001	EXTENSION, TARGET, UNIVERSAL	2
12	8150-TE-0005	EXTENSION, TARGET, .145	2
13	8160-BP-0005	BLANK, TARGET, .145	2