



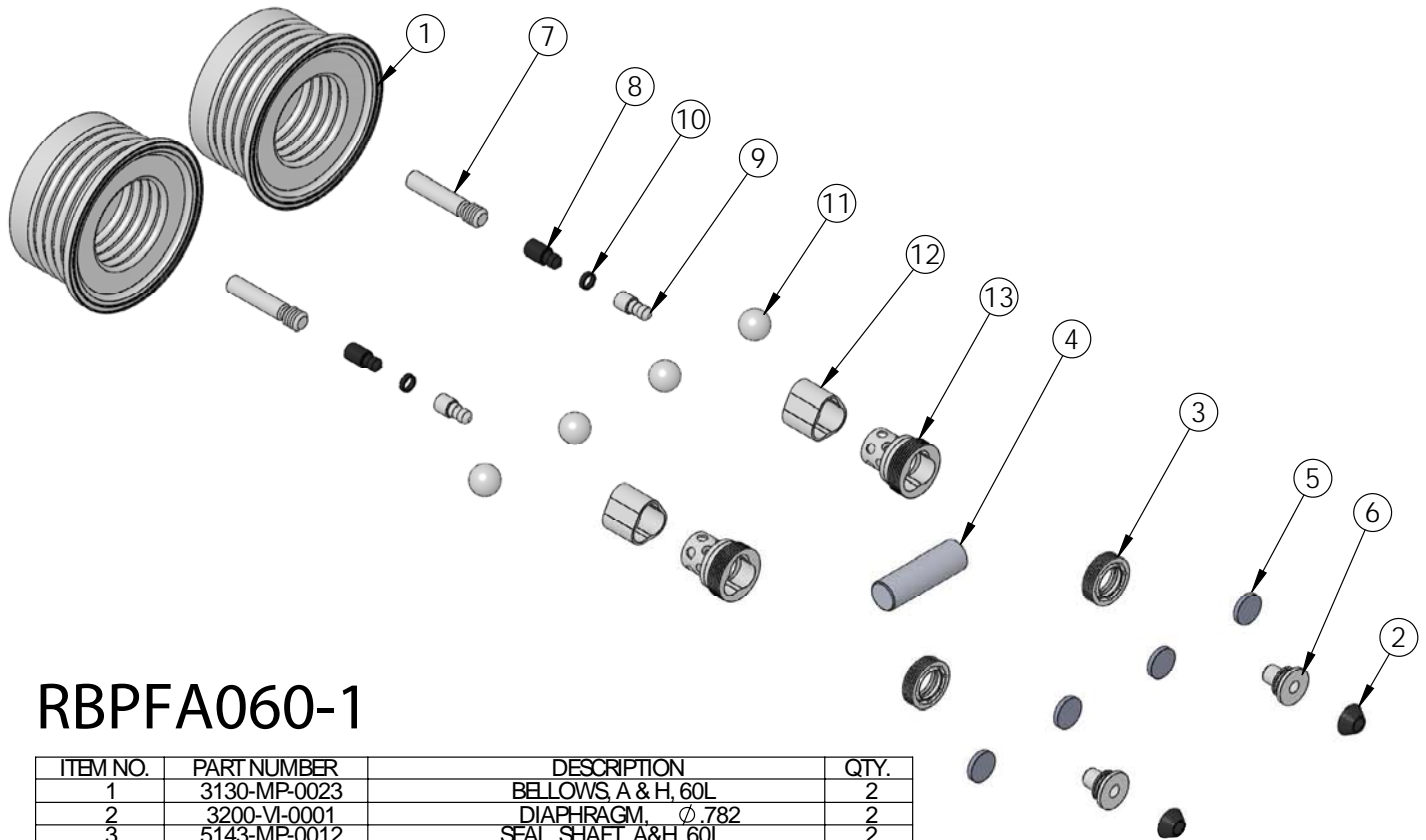
WHITE KNIGHT
.....engineer approved™

PUMP REBUILD KIT

RBPFA060-1 Rebuild Kit

Rebuild kit for PFA060 pump is RBPFA060-1. Rebuild kit for dry-run PFASD060 pump is RBPFASD060-1. To request rebuilds by White Knight, use RBPFA060-5 or RBPFASD060-5. Contact White Knight for details. Pump rebuilds require tool kit: 12200-XX-0029 (Legacy# PFA060-170).

Note: Dry-run RBPFASD060-1 pump rebuild kits include different shaft and shaft seals.



RBPFA060-1

ITEM NO.	PART NUMBER	DESCRIPTION	QTY.
1	3130-MP-0023	BELLOWS, A & H, 60L	2
2	3200-VI-0001	DIAPHRAGM, Ø.782	2
3	5143-MP-0012	SEAL SHAFT, A&H, 60L	2
4	5144-PF-0023	SHAFT, SOLID, PFA, 60L	1
5	6140-PP-0002	BAFFLE, 800"	4
6	6150-UH-0001	SEAT, QEV EXHAUST, 30L & 60L	2
7	8140-TE-0005	STEM, SD TARGET, 60L	2
8	8150-BP-0001	EXTENSION, TARGET, UNIVERSAL	2
9	8150-TE-0005	EXTENSION, TARGET, .145	2
10	8160-BP-0005	BLANK TARGET, .145	2
11	4100-MP-0001	CHECK BALL -3/4"	4
12	4135-MP-0001	BOTTOM CHECK SEAT- 10GPM HIGH FLOW	2
13	4142-MP-0001	TOP CHECK CAGE-10GPM HIGH FLOW	2

<https://wkfluidhandling.com/pfa-series/>



Copyright © 2021 White Knight Fluid Handling | A Graco company
P: 435.783.6040 | info@wkfluidhandling.com | <https://wkfluidhandling.com>

Published: 25 Feb 2021
Subject to change without notice