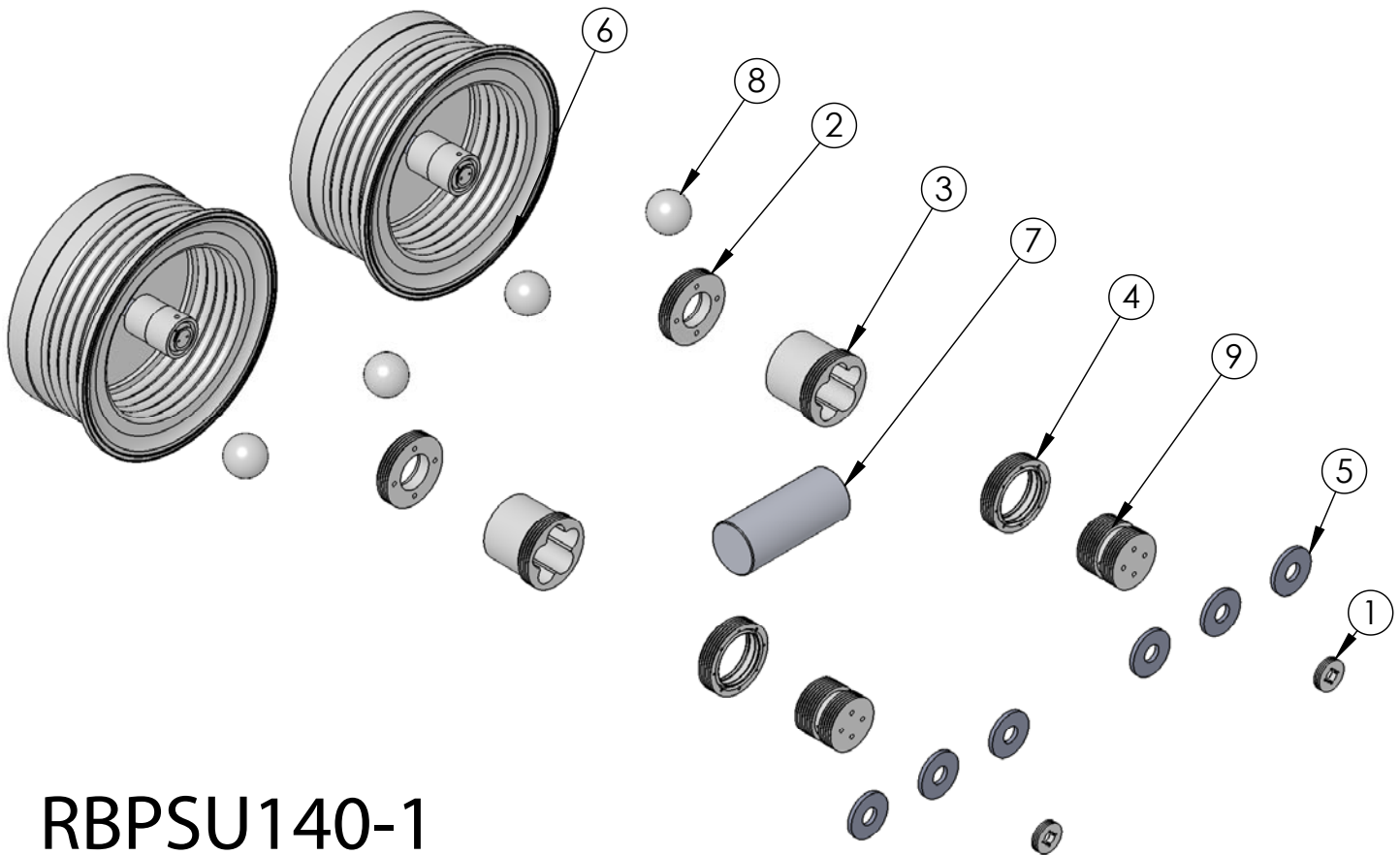


RBPSU140-1 Rebuild Kit

Rebuild kit for PSU140 pump is RBPSU140-1. To request rebuilds by White Knight, use RBPSA140-5. Contact White Knight for details. Pump rebuilds require tool kit: 12200-XX-0027 (Legacy# PSU140-170).



RBPSU140-1

ITEM NO.	PART NUMBER	DESCRIPTION	QTY.
1	3133-TE-0006	REPLACEABLE SEAT, SHIFT, UNIVERSAL	2
2	4135-MP-0009	SEAT, CHECK, BOTTOM, U,140L (HI-FLOW)	2
3	4142-MP-0007	SEAT, CHECK, TOP, U, 140L (HI-FLOW)	2
4	5143-MP-0005	SEAL, SHAFT, 140L, U-SERIES	2
5	6140-FP-0004	BAFFLE POROUS POLY 60L	6
6	14300-MP-0028	BELLOWS, ASSEMBLY	2
7	14320-PF-0003	LOADED SHAFT ASSEMBLY, 140L, (with Ceramic Insert)	1
8	4100-MP-0003	CHECK BALL- 1-1/8"	4
9	6530-TE-0003	30GPM SHUTTLE END CAP	2