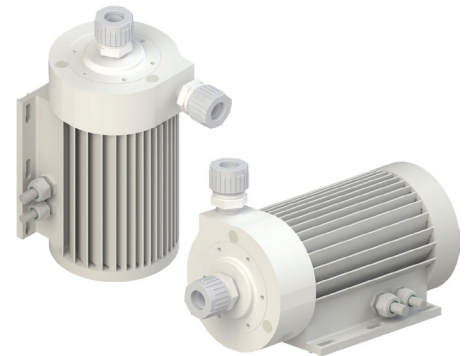


Configuration

PCA 300 - AF W5P - T B00B00 - B0B0 A - XX0

0	1.	2.	3.	4	5	6	7	8	9	10
Model	Size	Housing	Connection	Flow Config	Liquid Inlet	Liquid Outlet	Head Drain	Back Drain	Cooling	Controller



Instructions

A selection is required for each option.
 Contact support for revision or copy exact information.

Standard options are highlighted







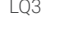
0. Model	
Centrifugal Pump	PCA

1. Size	
3 HP	300

2. Housing	
Air Cooled, ETFE Coated	AF

3. Connection	
<i>Hard wired, Pigtail, ETFE Jacket</i>	
5 m Cord	W5P
8 m Cord	W8P

4. Flow Configuration		
Standard Impeller, Volute, Sleeve (PTFE, PFA flow path)		T

Liquid Fittings		5. Inlet	6. Outlet
Plugged		B00	B00
Flaretek Compatible 	1/2 in.	F08	F08
	3/4 in.	F12	F12
	1 in.	F16	F16
	1-1/4 in.	F20	F20
Pillar S-300 	3/8 in.	-	P06
	1/2 in.	P08	P08
	3/4 in.	P12	P12
	1 in.	P16	P16
	1-1/4 in.	P20	P20
	1-1/2 in.	P24	-
PrimeLock 	1/2 in.	L08	L08
	3/4 in.	L12	L12
	1 in.	L16	L16
	1-1/4 in.	L20	-
FNPT 	1/2 in.	-	N08
	3/4 in.	N12	N12
	1 in.	N16	N16
	1-1/4 in.	N20	-
Tube Out 	1/2 in.	-	T08
	3/4 in.	T12	T12
	1 in.	T16	T16
	1-1/4 in.	T20	T20
	1-1/2 in.	T24	-
Weldable 	3/4 in.	W12	W12
	1 in.	W16	W16
LQ3 	3/4 in.	Q12	Q12
	1 in.	Q16	Q16

Drains		7. Head	8. Back
Plugged		B0	B0
Flaretek Compatible	1/4 in.	F4	F4
	3/8 in.	F6	F6
Pillar S-300	1/8 in.	P2	P2
	1/4 in.	P4	P4
	3/8 in.	P6	P6
FNPT	1/4 in.	N4	N4
	3/8 in.	N6	N6

9. Cooling Module		
No Module, Passive Cooling		X
Forced Air Cooling Module		A

10. Controller	
No Controller	XX0
Controller with external power supply, initial release	EX0