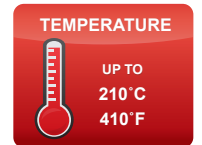
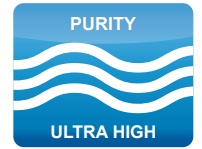
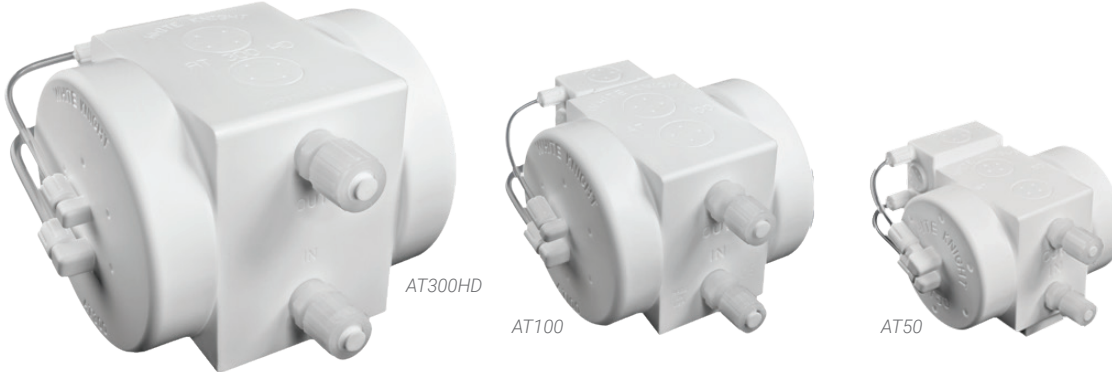


## Shuttle-Driven PTFE Pumps for High-Temperature Applications

AT Series pumps are discontinued. Please upgrade to PSU Series pumps for better performance, improved reliability, shorter lead times, extended pump life, and increased warranty periods. See pump comparison information below or online at: <https://wkfluid.com/at-series/>

Proven reliable recirculation of the harshest chemicals at up to 210°C (410°F)



### Overview

AT Series pumps were the world's first metal-free PTFE/PFA pumps capable of recirculating high-purity chemicals at up to 210°C (410°F) in constant or thermal cycling applications. The pumps perform safely and reliably running continuously throughout their one-year warranty. The pumps are available in AT50, AT100 and AT300 models, which are capable of flow rates up to 20, 40, and 110 lpm, respectively.

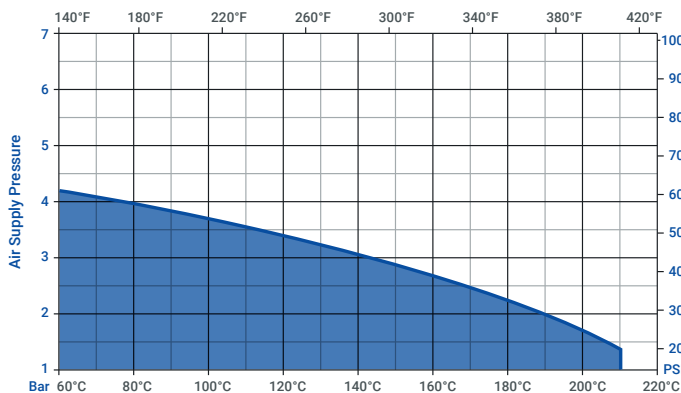
### Features & Benefits

- PTFE heads with Synchro-Thread™
- Nonmetal PTFE/PFA design for leak-free operation
- No elastomer O-rings, no leaks, never retorque
- Pneumatic Logic™ minimizes pulsation and vibration
- Ceramic in air shuttle valve
- No lubrication in shift mechanisms
- Minimal parts for durable design
- Various liquid connection options
- Class 100 cleanroom assembly, testing, and packaging
- No preventative maintenance during one-year warranty

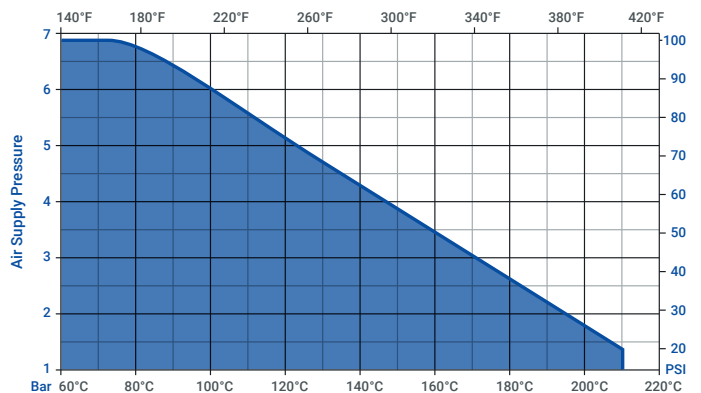
## PUMP COMPARISONS

### Temperature Limits

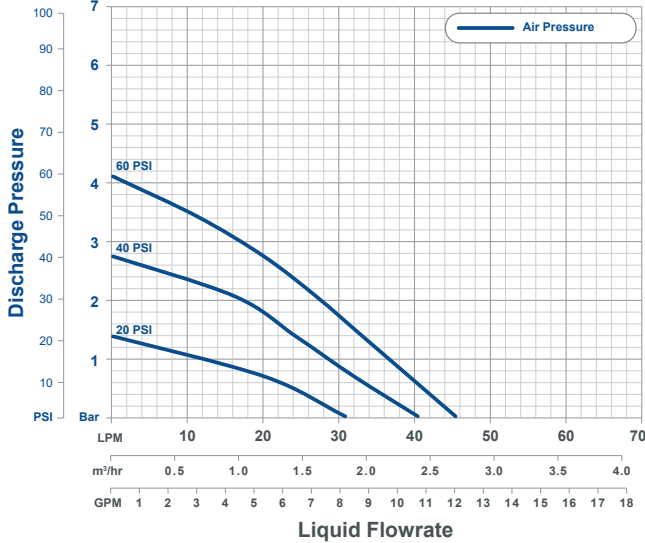
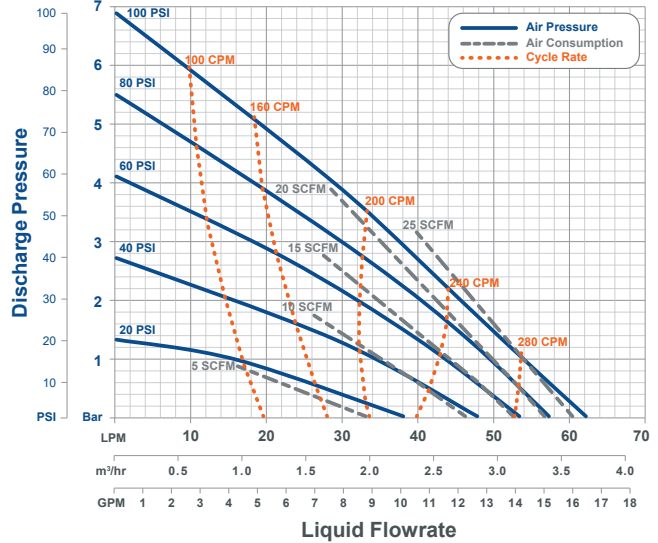
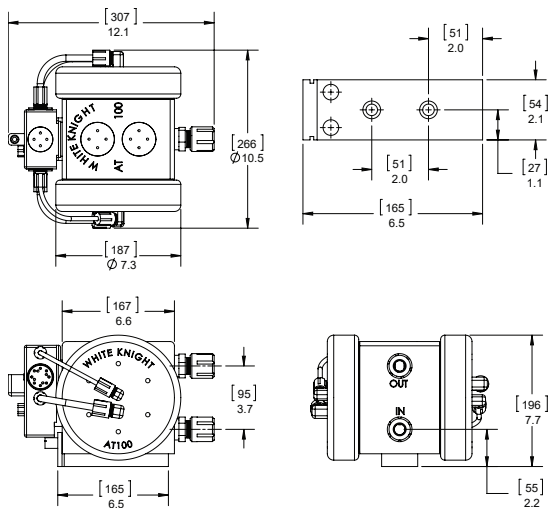
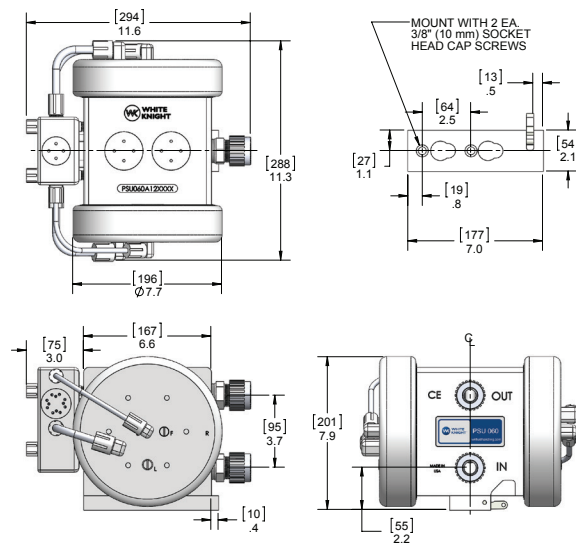
#### AT Series



#### PSU Series





**AT100 - PSU060 COMPARISON**
**AT100 Performance**

**PSU060 Performance**

**AT100 Dimensions**

**PSU060 Dimensions**

**Specifications**

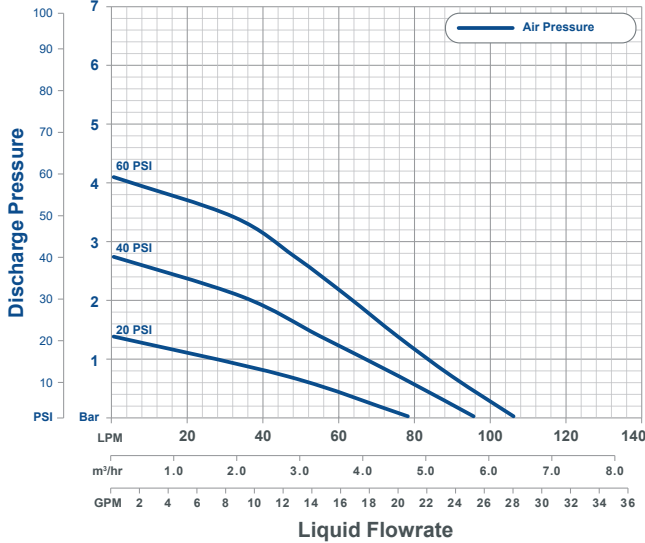
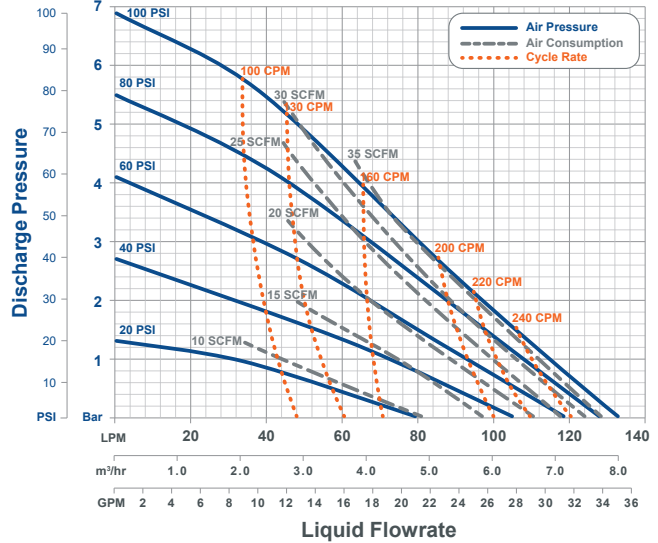
Model	AT100	PSU060
<b>Max Flow Rate*</b>	40 lpm 10 gpm	62.2 lpm 16.43 gpm
<b>Displacement Per Cycle*</b>	0.151 liters 0.040 gal	0.178 liters 0.047 gal
<b>Cycles per min</b>	≤ 275	≤ 348
<b>Air Connection</b>	1/4 in FNPT	1/4 in FNPT
<b>Weight</b>	13.0 kg 28.6 lb	15.2 kg 33.4 lb
<b>Sound</b>	<b>Pressure**</b>	72.38 dB(a) 79.12 dB(a)
	<b>Power**</b>	64.31 dB(a) 71.98 dB(a)
<b>Fluid Path Materials</b>	PTFE, PFA, Ceramic	PTFE, PFA, Ceramic
<b>Non-Fluid Path Materials</b>	PTFE, PFA, Ceramic	PTFE, PFA, Ceramic
<b>Warranty</b>	1 Year	2 Years

Model	AT100	PSU060
<b>Max Fluid Temperature</b>	210°C 410°F	210°C 410°F
<b>Max Supply Air Pressure</b>	4 Bar 60 psi	7 Bar 100 psi
<b>Min Startup Air Pressure</b>	1.4 Bar 20 psi	1.4 bar 20 psi
<b>Max Suction Lift*</b>	1 m 3 ft	1 m 3 ft
<b>Fluid Path Materials</b>	PTFE, PFA, Ceramic	PTFE, PFA, Ceramic
<b>Non-Fluid Path Materials</b>	PTFE, PFA, Ceramic	PTFE, PFA, Ceramic
<b>Warranty</b>	1 Year	2 Years

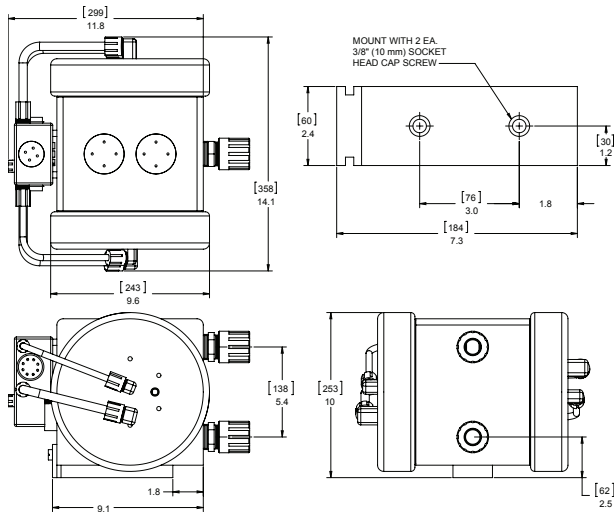
All AT & PSU Series Models	
<b>Stroke Detection</b>	Fiber optic with or without D10 sensor, or solid state pressure switch (NPN or PNP)
<b>Leak Detection</b>	Fiber optic with or without sensor, or conductivity
<b>Electronic Control</b>	CPC, CPT, or custom. Call for details.

\*May vary by configuration. Suction lift diminishes over time. Recommended installation level less than 3 ft above source.  
 \*\*dB at 60 psi 50 CPM (top) and 60 psi max. CPM (bottom). Sound levels measured in accordance with ISO9614-2:1997.

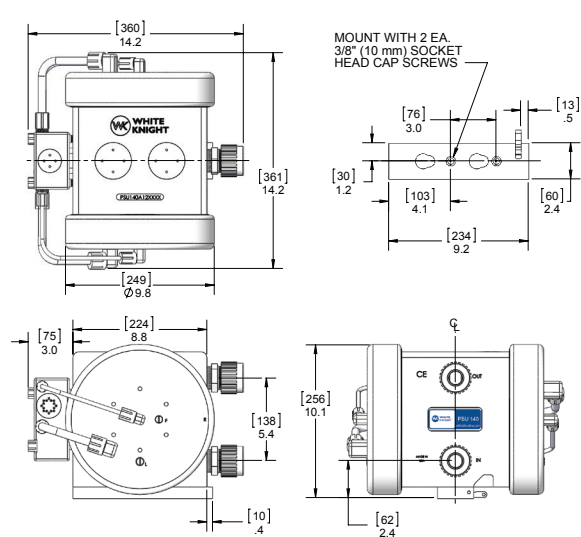
\*AT Series pumps are discontinued. Recommended replacements are PSU Series pumps. Comparison: <https://wkfluidhandling.com/at-series/> PSU Series: <https://wkfluidhandling.com/psu-series/>

**AT300 - PSU140 COMPARISON**
**AT300 Performance**

**PSU140 Performance**

**AT300 Dimensions**

[mm] in


**PSU140 Dimensions**

[mm] in


**Specifications**

Model	AT300	PSU140
<b>Max Flow Rate*</b>	110 lpm 30 gpm	123 lpm 32.5 gpm
<b>Displacement Per Cycle*</b>	0.606 liters 0.16 gal	0.500 liters 0.132 gal
<b>Cycles per min</b>	≤ 175	≤ 273
<b>Air Connection</b>	3/8 in FNPT	3/8 in FNPT
<b>Weight</b>	28.3 kg 62.4 lb	22.7 kg 50.0 lb
<b>Sound</b>	<b>Pressure**</b>	74.80 dB(a) 82.31 dB(a)
	<b>Power**</b>	69.24 dB(a) 77.17 dB(a)
<b>Pressure**</b>	81.98 dB(a) 91.60 dB(a)	76.37 dB(a) 83.16 dB(a)

Model	AT300	PSU140
<b>Max Fluid Temperature</b>	210°C 410°F	210°C 410°F
<b>Max Supply Air Pressure</b>	4 Bar 60 psi	7 Bar 100 psi
<b>Min Startup Air Pressure</b>	1.4 Bar 20 psi	1.4 bar 20 psi
<b>Max Suction Lift*</b>	1 m 3 ft	1 m 3 ft
<b>Fluid Path Materials</b>	PTFE, PFA	PTFE, PFA
<b>Non-Fluid Path Materials</b>	PTFE, PFA, Ceramic	PTFE, PFA, Ceramic
<b>Warranty</b>	1 Year	2 Years

All AT & PSU Series Models	
<b>Stroke Detection</b>	Fiber optic with or without D10 sensor, or solid state pressure switch (NPN or PNP)
<b>Leak Detection</b>	Fiber optic with or without sensor, or conductivity
<b>Electronic Control</b>	CPC, CPT, or custom. Call for details.

\*May vary by configuration. Suction lift diminishes over time. Recommended installation level less than 3 ft above source.  
 \*\*dB at 60 psi 50 CPM (top) and 60 psi max. CPM (bottom). Sound levels measured in accordance with ISO9614-2:1997.

\*AT Series pumps are discontinued.  
 Recommended replacements are PSU Series pumps.  
 Comparison: <https://wkfluidhandling.com/at-series/>  
 PSU Series: <https://wkfluidhandling.com/psu-series/>