

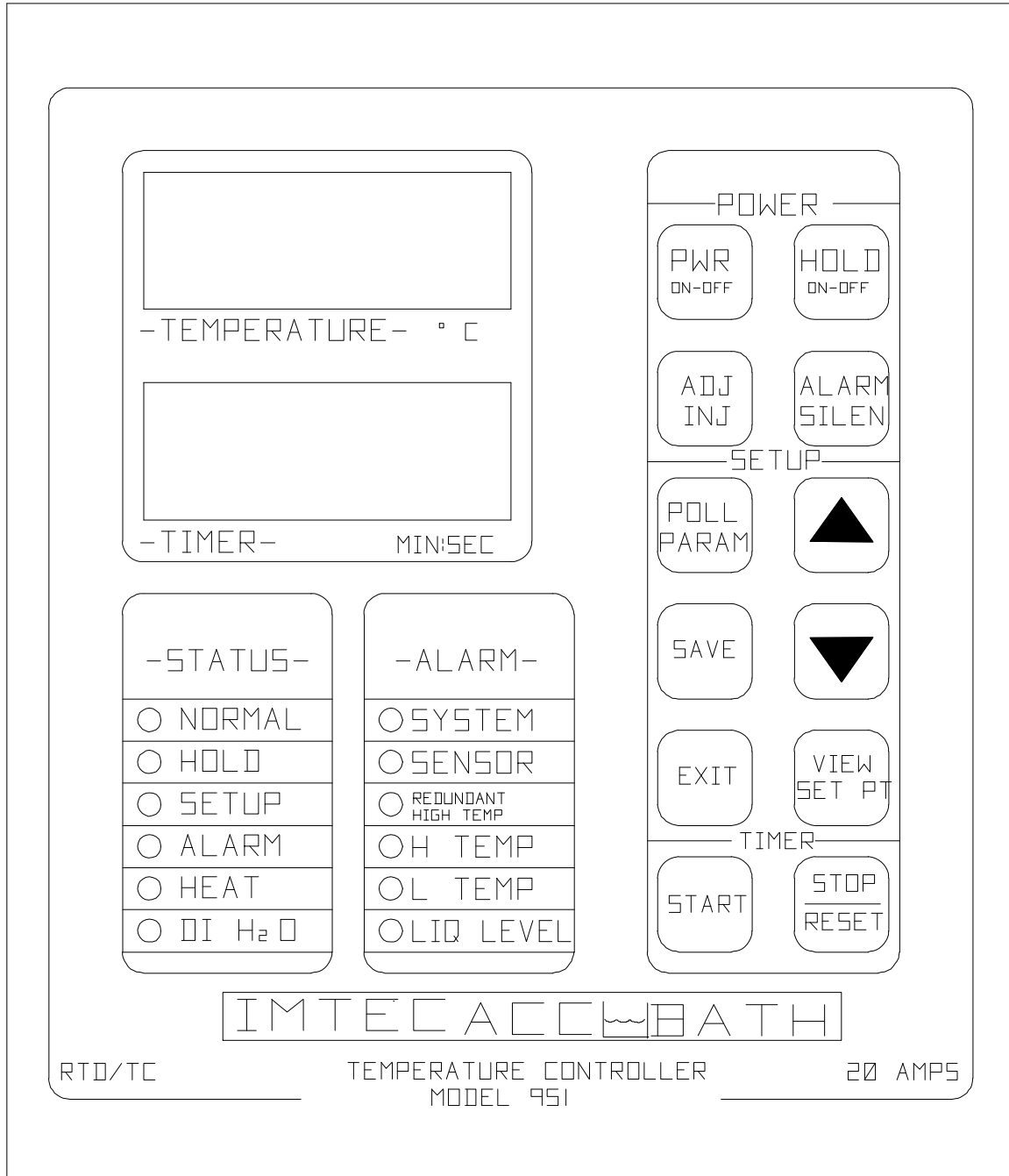


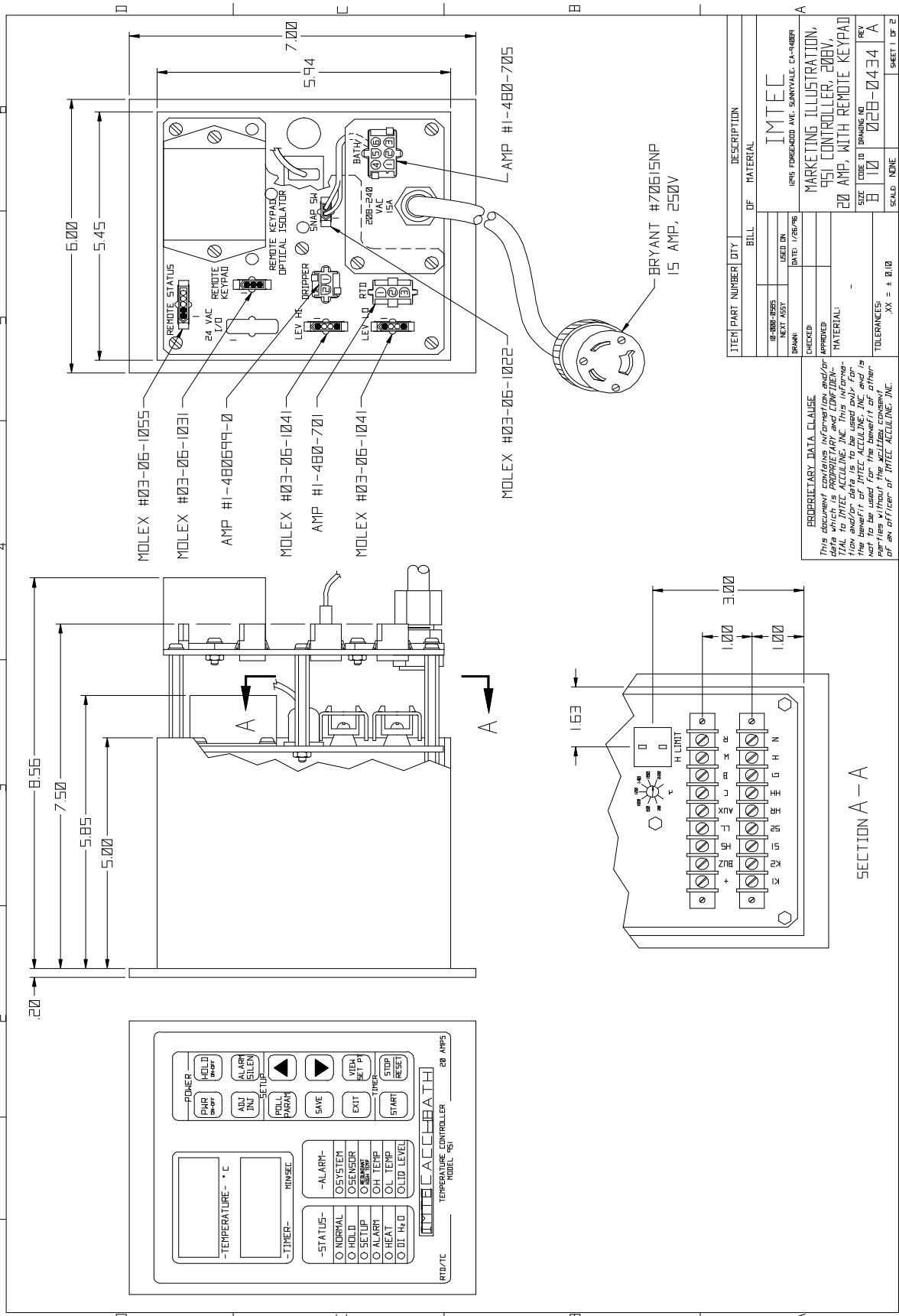
Model 951 Bath Controller Physical Specifications Chart

Function	General process control achieved through PID power control and (optional) bang-bang switching from a second setpoint
Temperature Control Range	0.0 to 249.9°C
Resolution Temp.	0.1°C
Time Range	0. To 99:59 Min:Sec
Time Resolution	1 Sec.
Memory Control Parameter	EPROM, 10 year minimum without power
Sensor Input:Process Temp.	100-Ohm, Platinum-wire RTD, JISC standard (.00392 ohms/ohm°C), stainless steel, encased, encapsulated (J-type thermocouple option similarly constructed)
Sensor Input:Over-Temp #1	Thermocouple, J-type settable, 20-220°C
Sensor Input:Over-Temp #2	Thermostat, normal closed, opens at 210°C; resets at 193°C
Sensor Input: Liquid Level	Open collector (NPN) output simulating switch closure
Ambient Operating Range	0-50°C local controller environment
Construction Case	Kydex enclosure with polycarbonate laminated face, back-printed
Size: Box	7.0"H x 5.5"W x 6.5"D with standoff (approx); 5.87"D without standoff
Weight	4 lbs (approx)
Output	SSR opto isolated, zero cross 20 Amp
Power:	20 VA, 208 VAC (200-245 VAC, working), 50/60 Hz; No circuit breaker provided
Connection: Electrical to Bath	Basic Power: Terminal screw strip on 3/8" centers plus miniature T/C, J-type. Adapters on Standoff: 2, 3, & 6 port AMP-brand universal Mate-N-Lock receptacles. Level Sensors (optional): 4-port MOLEX. NOTE: standard 10 foot power cable hard-mounted on bath; other lengths available by special order
Connection: Electrical to Facility	Power cable facility termination: USA - NEMA L6-15 250V male plug; Non-USA - Plug to be supplied by user
Displays: Digital	Two (each 4 character, 0.8"H, seven red segment LEDs)
Displays: Indicator	LEDs, discrete (red, green, amber)
Annunciators	Audible, approximately 2500 Hz

Facility Requirements

Power: Heater/Controller	Dedicated circuit of 200-245 VAC; Single phase, 20 Amp; Circuit breaker-protected; Line noise filtering as required
Environment	Protected headcase or equivalent; No exposure to chemical fumes





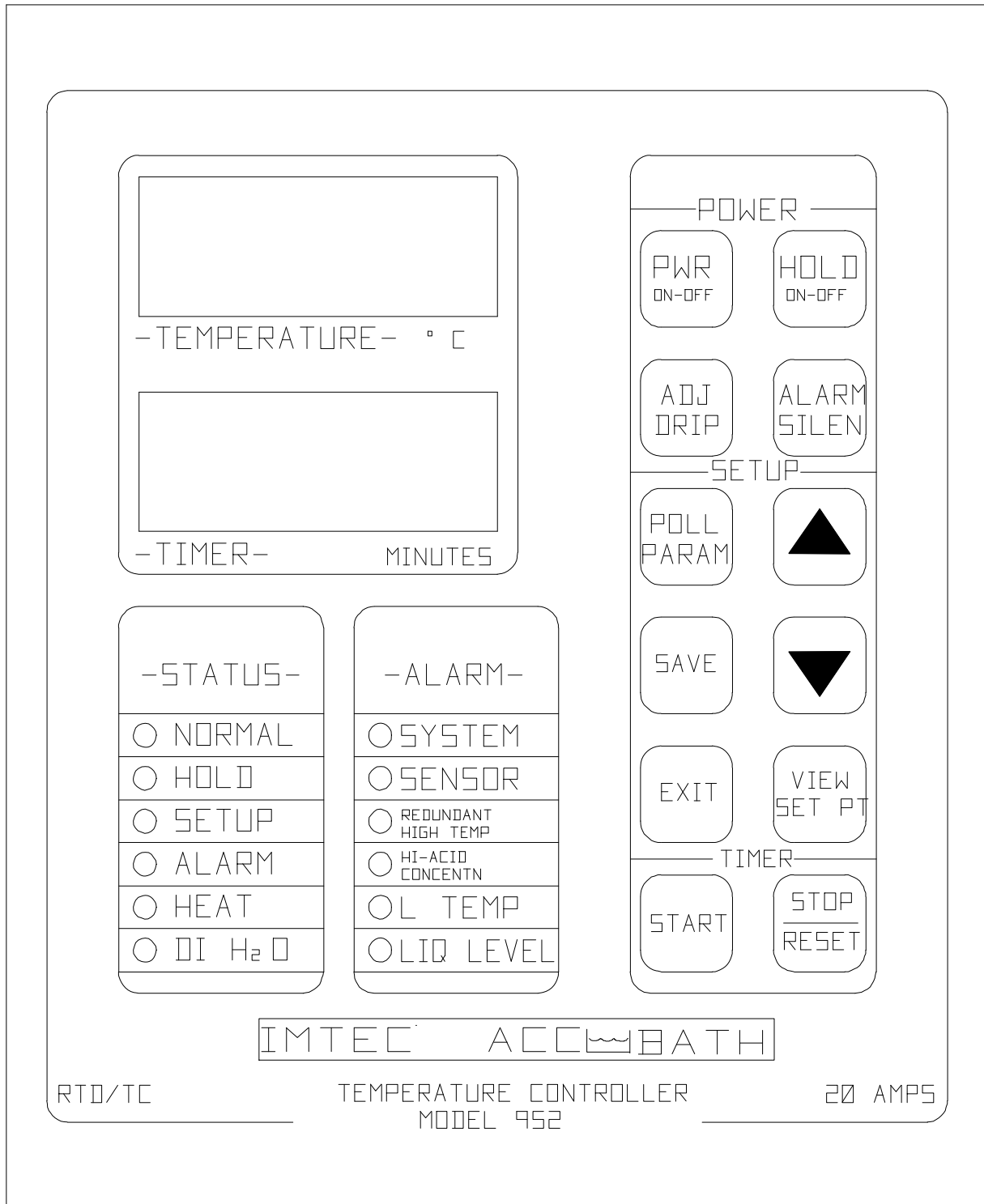
- MOLEX #03-06-1055
- MOLEX #03-06-1031
- AMP #1-480699-0
- MOLEX #03-06-1041
- AMP #1-480-701
- MOLEX #03-06-1041

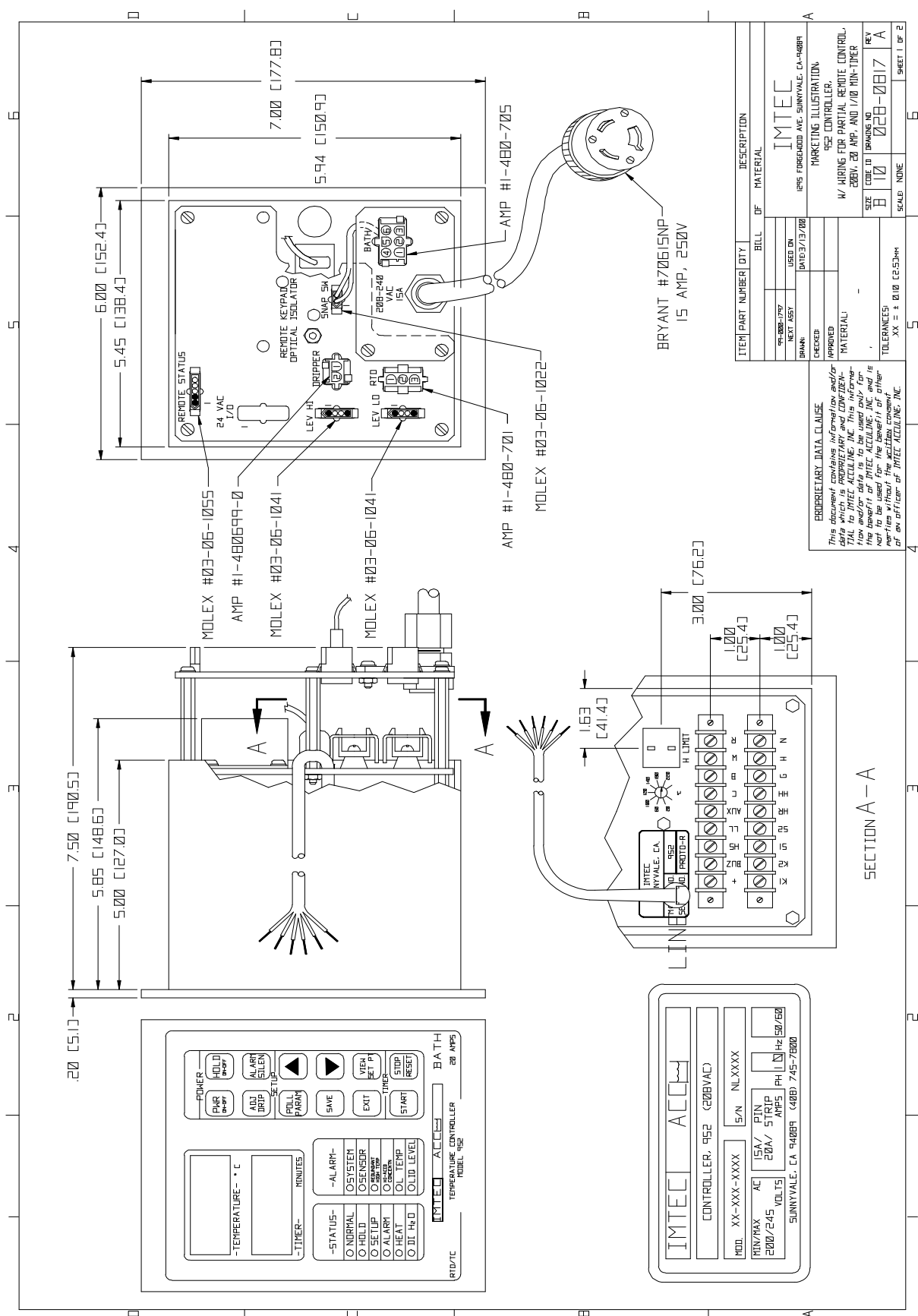
MOLEX #03-06-1022

BRYANT #70615NP
15 AMP, 250V

PROPRIETARY DATA CLAUSE
This document contains information and/or data that is the property of IMTEC ACCUBATH, INC. This information and/or data is to be used only for the benefit of IMTEC ACCUBATH, INC. and its affiliates without the written consent of an officer of IMTEC ACCUBATH, INC.

ITEM	PART NUMBER	QTY	DESCRIPTION
1	IMTEC		MARKETING ILLUSTRATION, 951 CONTROLLER, 200V, 20 AMP, WITH REMOTE KEYPAD
2	IMTEC		SIZE CODE TO DRAWING TO
3	IMTEC		REV
4	IMTEC		SCALE NONE
5	IMTEC		SHEET 1 OF 2





ITEM	PART NUMBER	QTY	DESCRIPTION
			BILL OF MATERIAL
	94-988-037		USED ON
	NEXT ASSY		DATE 3/13/00
	DRWN:		DATE 3/13/00
	CHKD:		
	APPROVED:		
	MATERIAL:		W/ WORKING FOR PARTIAL REMOTE CONTROL.
			200V, 20 AMP, AND 1/10 MIN-DUR
	SIZE		CODE TO TRANSFORMER
			B 10
	TOLERANCES:		XX ± 0.10 (2.53)MM
	SCALE		NONE
			5
			6
			SHEET 1 OF 2

PROBATIONARY DATA CLAUSE
This document contains information and/or data that is the property of IMTEC, INC. This information and/or data is to be used only for the benefit of IMTEC, INC. and is not to be used for any other purpose without the written consent of an officer of IMTEC, INC.