

## Durable Shuttle-Driven Pumps For High-Purity Chemicals

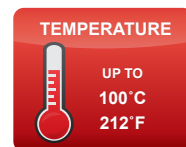
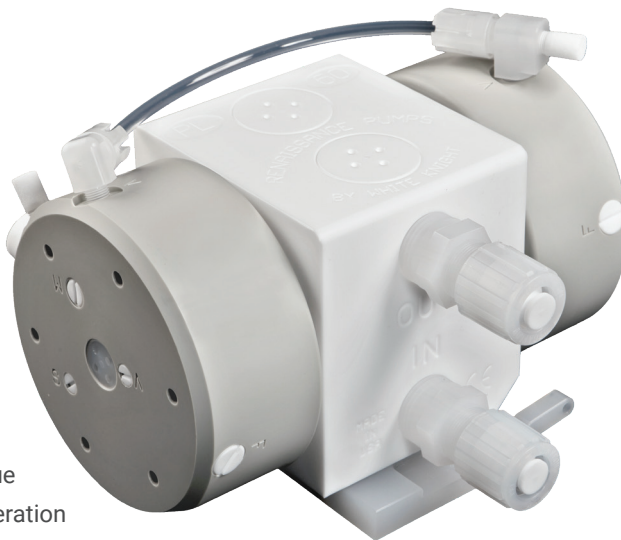
Although PL60 pumps are actively stocked and supported, PSA060 pumps are recommended upgrades. PSA060 pumps offer improved reliability and shorter lead times. See pump comparisons below or online at: <https://wkfluid.com/pl-pump/>

### Overview

PL60 metal-free bellows pumps feature PTFE/PFA fluid paths. They distribute chemicals at temperatures up to 100°C (212°F) and allow for air supply pressures up to 7 Bar (100 psi). The pumps operate continuously throughout their two-year warranty. The pumps are capable of maximum flow rates of 60 L/min.

### Features & Benefits

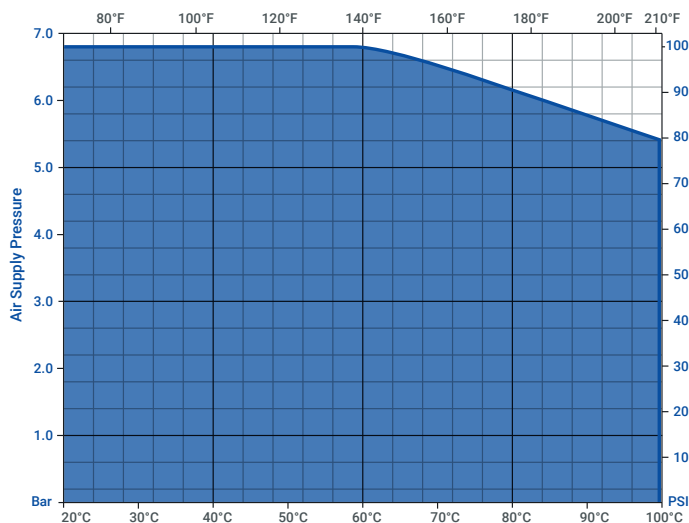
- Metal-Free PTFE/PFA liquid path
- No elastomer O-rings, no leaks, never retorque
- Nonmetal design provides safe, leak-free operation
- Pneumatic Logic™ minimizes pulsation and vibration
- No preventative maintenance during two-year warranty
- Durable machined design with minimal parts
- Polypropylene heads; ceramic in air side
- A solenoid-driven option is also available



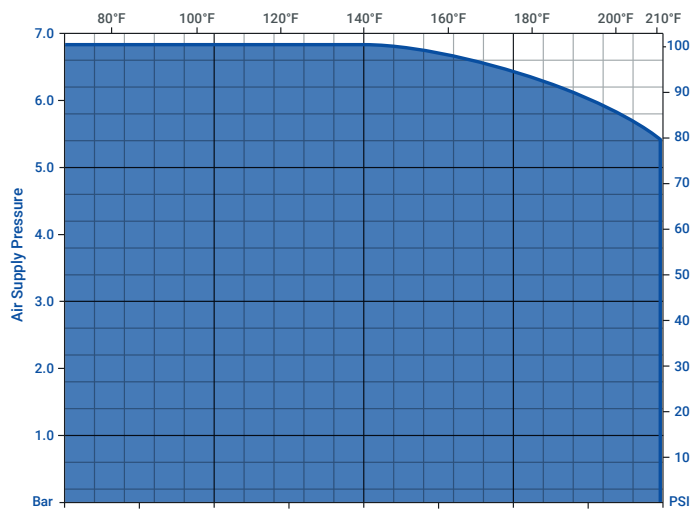
## PUMP COMPARISONS

### Temperature Limits

#### PL Series

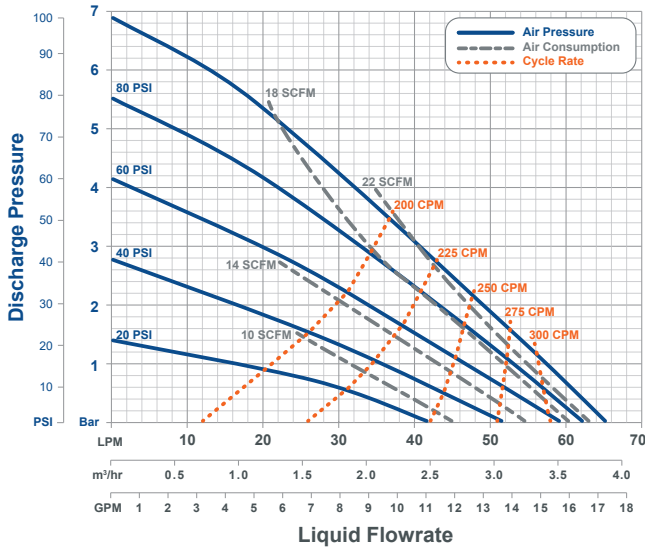


#### PSA Series

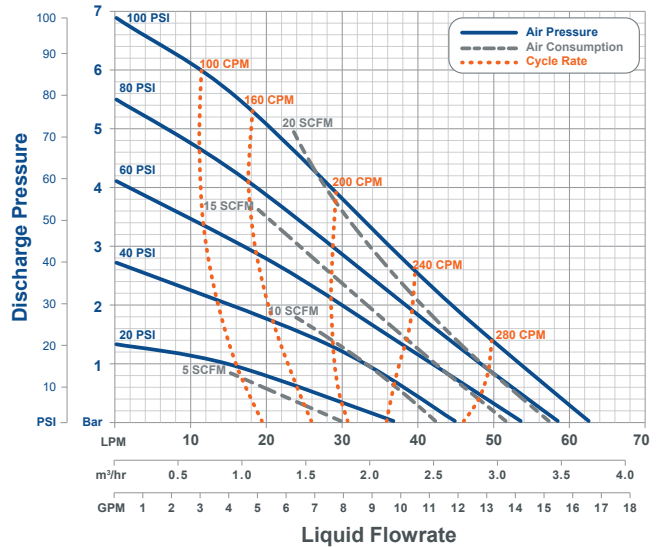


## PL60 - PSA060 COMPARISON

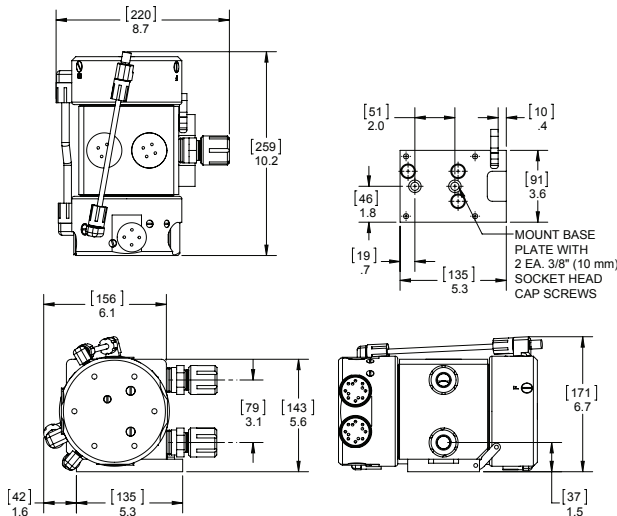
### PL60 Performance



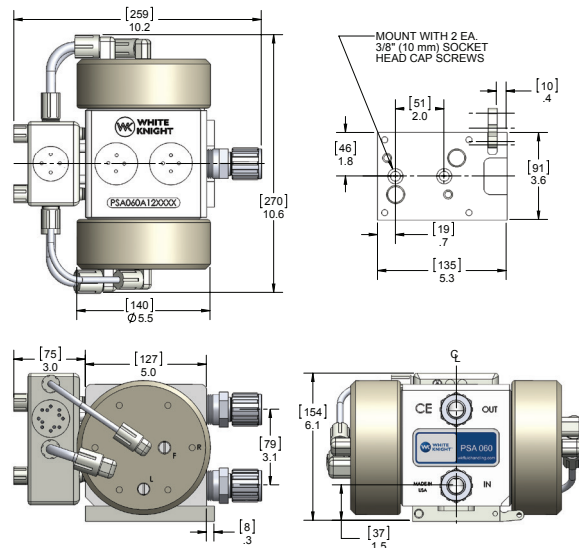
### PSA060 Performance



### PL60 Dimensions Solenoid-Driven Model [mm] in



### PSA060 Dimensions [mm] in



### Specifications

Model	PL60	PSA060
Max Flow Rate*	60 lpm 15 gpm	62.3 lpm 16.46 gpm
Displacement Per Cycle*	0.143 liters 0.038 gal	0.178 liters 0.047 gal
Cycles per min	≤ 320	≤ 348
Air Connection	1/4 or 3/8 in FNPT	1/4 in FNPT
Weight	5.6 kg 12.3 lb	4.7 kg 10.4 lb
Sound	Pressure**	75.44 dB(a) 83.44 dB(a)
	Power**	66.94 dB(a) 75.73 dB(a)

Model	PL60	PSA060
Max Fluid Temperature	100°C 212°F	100°C 212°F
Max Supply Air Pressure	7 Bar 100 psi	7 Bar 100 psi
Min Startup Air Pressure	1.4 Bar 20 psi	1.4 Bar 20 psi
Max Suction Lift*	1 m 3 ft	1 m 3 ft
Fluid Path Materials	PTFE, PFA	PTFE, PFA
Non-Fluid Path Materials	PTFE, PFA, PP, Ceramic	PTFE, PFA, PP, Ceramic
Warranty	2 Years	2 Years

PL60 & PSA060 Models	
Stroke Detection	Fiber optic with or without D10 sensor, or solid state pressure switch (NPN or PNP)
Leak Detection	Fiber optic with or without sensor, or conductivity
Electronic Control	CPC, CPT, or custom. Call for details.

\*May vary by configuration. Suction lift diminishes over time. Recommended installation level less than 3 ft above source.  
\*\*dB at 100 psi 50 CPM (top) and 100 psi max. CPM (bottom). Sound levels measured in accordance with ISO9614-2:1997.

\*PL30 & PL120 pumps are discontinued. Recommended replacements are PSA030 and PSA140 pumps. Although PL60 pumps are NOT discontinued, PSA060 pumps are recommended upgrades. Details: <https://wkfluid.com/psa/>